

Methodology article

Open Access

## A set of ligation-independent in vitro translation vectors for eukaryotic protein production

Viola Bardóczy<sup>1</sup>, Viktória Géczi<sup>1</sup>, Tatsuya Sawasaki<sup>2</sup>, Yaeta Endo<sup>2</sup> and Tamás Mészáros\*<sup>3</sup>

Address: <sup>1</sup>Budapest University of Technology and Economics, Department of Applied Biotechnology and Food Science, 1111 Budapest, Műegyetem rkp. 3., Hungary, <sup>2</sup>Cell-Free Science and Technology Research Center, Ehime University, Bunkyo-cho 3-ban, Matsuyama 790-8577, Japan and <sup>3</sup>Pathobiochemistry Research Group of Hungarian Academy of Sciences and Semmelweis University, 1088 Budapest, Puskin u. 9., Hungary

Email: Viola Bardóczy - bardoczy@mail.bme.hu; Viktória Géczi - gvikkancs@gmail.com; Tatsuya Sawasaki - sawasaki@eng.ehime-u.ac.jp; Yaeta Endo - yendo@eng.ehime-u.ac.jp; Tamás Mészáros\* - metta@puskin.sote.hu

\* Corresponding author

Published: 27 March 2008

Received: 3 July 2007

BMC Biotechnology 2008, 8:32 doi:10.1186/1472-6750-8-32

Accepted: 27 March 2008

This article is available from: <http://www.biomedcentral.com/1472-6750/8/32>

© 2008 Bardóczy et al; licensee BioMed Central Ltd.

This is an Open Access article distributed under the terms of the Creative Commons Attribution License (<http://creativecommons.org/licenses/by/2.0>), which permits unrestricted use, distribution, and reproduction in any medium, provided the original work is properly cited.

### Abstract

**Background:** The last decade has brought the renaissance of protein studies and accelerated the development of high-throughput methods in all aspects of proteomics. Presently, most protein synthesis systems exploit the capacity of living cells to translate proteins, but their application is limited by several factors. A more flexible alternative protein production method is the cell-free in vitro protein translation. Currently available in vitro translation systems are suitable for high-throughput robotic protein production, fulfilling the requirements of proteomics studies. Wheat germ extract based in vitro translation system is likely the most promising method, since numerous eukaryotic proteins can be cost-efficiently synthesized in their native folded form. Although currently available vectors for wheat embryo in vitro translation systems ensure high productivity, they do not meet the requirements of state-of-the-art proteomics. Target genes have to be inserted using restriction endonucleases and the plasmids do not encode cleavable affinity purification tags.

**Results:** We designed four ligation independent cloning (LIC) vectors for wheat germ extract based in vitro protein translation. In these constructs, the RNA transcription is driven by T7 or SP6 phage polymerase and two TEV protease cleavable affinity tags can be added to aid protein purification. To evaluate our improved vectors, a plant mitogen activated protein kinase was cloned in all four constructs. Purification of this eukaryotic protein kinase demonstrated that all constructs functioned as intended: insertion of PCR fragment by LIC worked efficiently, affinity purification of translated proteins by GST-Sepharose or MagneHis particles resulted in high purity kinase, and the affinity tags could efficiently be removed under different reaction conditions. Furthermore, high in vitro kinase activity testified of proper folding of the purified protein.

**Conclusion:** Four newly designed in vitro translation vectors have been constructed which allow fast and parallel cloning and protein purification, thus representing useful molecular tools for high-throughput production of eukaryotic proteins.

## Background

In the last decade, attention focused on functionality and structure of proteins. Accelerated proteomics studies demand high-throughput protein production methods to ensure availability of proteins of interest. Presently, overexpression in *E. coli* cells is the most preferred protein production method. Though this system has been well optimized and is suitable for the simultaneous generation of a panel of proteins, its application is often limited by the insolubility of synthesized eukaryotic proteins [1]. Although different *E. coli* strains and various protein and peptide fusion partners have been developed to increase the solubility of heterologous proteins, these methods are not universal and have to be optimized individually for efficient protein production [2].

Recently, in vitro protein translation has emerged as an alternative to cell-based protein synthesis methods. The robustness of the translation apparatus is known since the fifties, and latest technical improvements made to cell-free translation resulted in protein production methods that approach the efficiency of cell-based systems [3]. Various sources of translation machinery can be used for cell-free in vitro translation systems, but -due to its low cost and capacity for synthesizing properly folded, high molecular weight eukaryotic proteins- wheat germ derived protein extract presently seems the most promising choice [4].

Unlike prokaryotic mRNA, eukaryotic mRNA has to be extensively modified to be an effective translation template. The 5'-cap is essential to translation initiation and has to be introduced to in vitro transcribed mRNAs using RNA polymerase, which incorporates the three modified nucleotides (7-mG-5'-ppp-5'-G). The efficiency of incorporation is low, and the excess of free modified nucleotides remaining in the mix dramatically decreases the productivity of translation. The 3'-end poly(A) tail of eukaryotic mRNAs also presents a technical difficulty during in vitro translation template preparation, as long polyA/T sequences of plasmids are unstable in host cells. To solve these problems, wheat germ in vitro translation vectors have been constructed with a special sequence replacing the cap. In the optimized vectors, the cap structure is substituted by either the tobacco mosaic virus translational enhancer  $\Omega$  sequence with an additional GAA triplet at the 5'-end (GAA  $\Omega$ ) [5], or an artificial 73 nucleotides containing a leader sequence [6]. The same laboratory also examined the requirements for a poly(A) tail, and found that translation did not depend on the sequence but only on the length of 3'-UTR. An additional benefit of these plasmids is that the produced mRNAs were effective in vitro translation templates in a wider range of concentration than in vitro capped mRNAs.

Although the optimized vectors improved the productivity of in vitro translation, in order to build high-throughput protein synthesis systems, every step of the procedure must be accelerated, including the cloning of target genes and the purification of translated proteins. Ligation independent cloning (LIC) was developed to facilitate complex cloning and subcloning strategies [7], and have been applied by many laboratories since then. LIC overcomes important limitations of traditional cloning technologies, since any PCR product can be cloned into LIC compatible vectors without using restriction endonucleases and ligation. The LIC method takes advantage of the 3' exonuclease activity of T4 DNA polymerase to create complementary 12- to 15- nucleotide overhangs in the vector and PCR product. Upon transformation into *E. coli* cells, the host repair enzymes ligate at the vector-insert junction; thus, LIC produces high cloning efficiency with minimal non-recombinant background [8].

A serious bottleneck of high-throughput protein production is the fast and high level purification of target proteins. Generally, the purification step is facilitated by addition of affinity tags to the N- or C- terminus of synthesized proteins. Although the affinity tags aid the purification, it might in many cases alter the in vivo function and structure of proteins; hence, it must be removed by site specific proteases. The Tobacco Etch Virus (TEV) protease is an ideal choice because it cleaves with high specificity at a seven-amino-acid recognition sequence [9]. Furthermore, it is active under a wide range of conditions, such as low temperature and high ionic concentration, and is only mildly sensitive to many protease inhibitors which are used to prevent protein degradation by host proteases.

We have improved two commercial vectors for wheat germ in vitro protein translation to generate LIC plasmids incorporating a TEV cleavable affinity tag. The modified vectors encode a leader sequence consisting of either a GST or a His affinity purification tag, followed by a TEV protease recognition site. Experiments with the modified vectors showed that they functioned effectively in all aspects, including cloning, translation, purification and cleavage. Furthermore, we demonstrated that a protein kinase purified from a wheat germ in vitro translation reaction possessed higher in vitro kinase activity than the same kinase produced by overexpression in *E. coli*. These features make the modified vectors suitable for high-throughput production of properly folded eukaryotic proteins.

## Results and Discussion

### Construction and characterization of LIC vectors

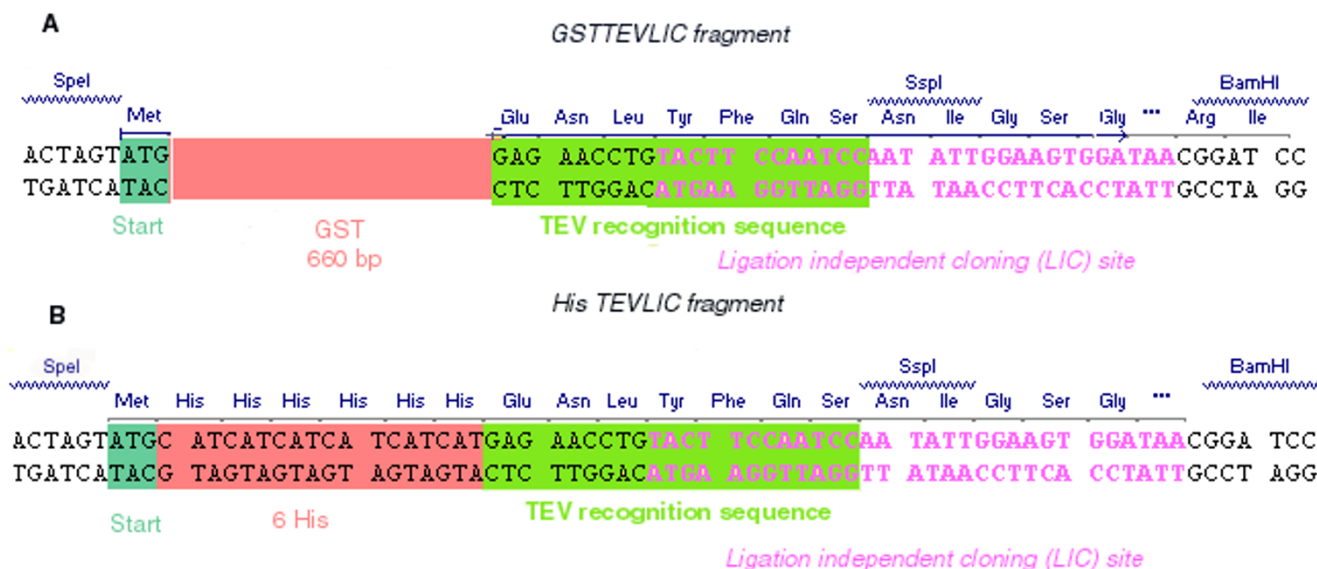
mRNA templates of commercial in vitro translation systems are produced by either T7 or SP6 bacteriophage RNA polymerases, therefore we modified the pEU3N-II and

pEU01 vectors which harbor T7 and SP6 promoters, respectively. The LIC vectors with cleavable affinity tags were created by inserting an oligonucleotide cassette or PCR-generated fragment into the multicloning site of host vectors. Sequencing of the constructed pEU3-NII-HLIC, pEU3-NII-GLIC, pEU-E01-HLIC, pEU-E01-GLIC vectors showed that the DNA fragments had been correctly introduced. Inserts in HLIC vectors encode an amino acid sequence consisting of an N-terminal methionine followed by a six-histidine affinity tag and the ENLYFQS TEV recognition site. The PCR fragment introduced into GLIC constructs possesses the same components except the six histidines are replaced by Glutathione-S-Transferase protein (Figure 1). The extensively used Gateway system shows limitations for protein production since the fusion partners and amino acids encoded by the recombination site cannot be removed without inserting protease specific motif coding nucleotides downstream of the recombination site, and non-native amino acids can interfere with the structure and functionality of purified proteins [10]. To obviate this drawback, an *SspI* restriction endonuclease site involving LIC was inserted in our vector constructs. This rational design places the TEV protease site in proximity of the native protein and allows removal of the affinity tag, leaving only three extra amino acid residues in N-terminal [11].

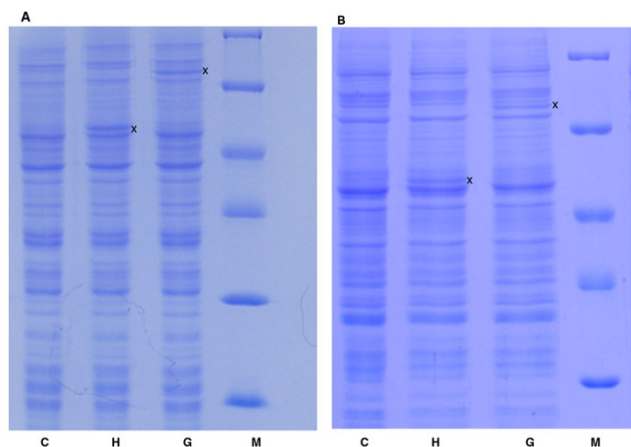
The created vectors were tested by generating constructs encoding a plant mitogen activated protein kinase, *AtMPK6*. The vectors were cleaved in the middle of the LIC site by *SspI* digestion, and the linearized plasmids were incubated with T4 DNA polymerase in presence of dGTP. Due to the 3'-5' exonuclease activity of T4 DNA polymerase, this protocol generated 15-base long single-stranded overhangs. To insert the target gene, the *AtMPK6* specific primers were designed with a 5'-end extension complementary to the LIC site, and the PCR products were treated with T4 DNA polymerase in presence of dCTP. The generated complementary overhangs allowed introduction of the target gene into the vectors treated with T4 DNA polymerase using a simple annealing step, without use of any other enzyme. The reaction mixture was directly transformed into competent cells, and colony PCR analysis showed that more than 90% of tested colonies carried the target gene, proving the LIC procedure to be very effective.

**In vitro translation of a mitogen activated protein kinase**

In order to test the protein synthesizing capacity of constructed vectors, two commercial wheat germ in vitro protein translation kits were used. These companies use different approaches to extend the lifetime and thus the productivity of in vitro translation reactions. The continuous supply of feeding solution is provided by diffusion through either a dialysis membrane [12] or simply the phase of different density solution [13], and they require



**Figure 1**  
Nucleotide sequence of inserted cassettes.

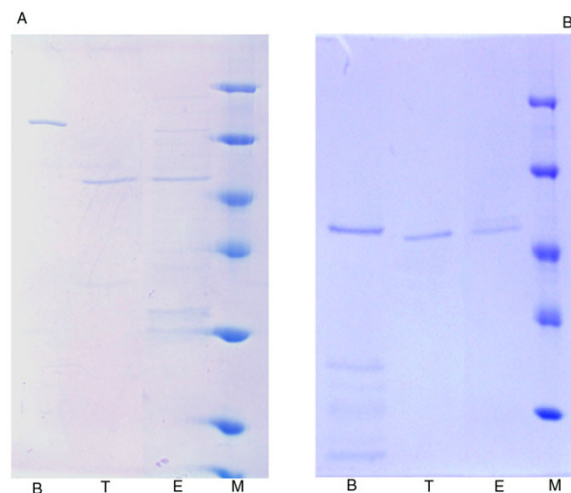


**Figure 2**  
**SDS-PAGE analysis of in vitro translated proteins. A.** CEFC translation reactions with pEU3-NII backbone vector constructs: Molecular weight marker (M), wheat germ extract control (C), 1 µl out of 50 µl in vitro translation reaction mixture with pEU3-NII-HLIC (H) or pEU3-NII-GLIC (G) vector. **B.** Bilayer translation reactions with pEU-E01 backbone vector constructs: Molecular weight marker (M), wheat germ extract (C), 5 µl out of 225 µl in vitro translation reaction mixture with pEU-E01-HLIC (H) or pEU-E01-GLIC (G) vector. Proteins present in the translation mixtures were separated on 12% SDS-PAGE gel and detected by Coomassie Blue staining. Vector encoded-kinases are indicated by asterisks.

T7 and SP6 RNA polymerase, respectively. The DNA templates were purified from *AtMPK6* comprising constructs with a commercial plasmid DNA isolation kit. The translation reactions were carried out according to protocols suggested by manufacturers. Polyacrylamide gel electrophoresis analysis of total protein samples demonstrated that all four vector encoded proteins with their expected size (Figure 2). The in vitro translated target proteins were detectable with Coomassie Blue staining, and the yields of different constructs and translation mixtures were comparable.

#### Purification and TEV cleavage of translated proteins

To further verify the functionality of the created vectors, the synthesized proteins were affinity purified and cut by TEV protease. The GST- and His-tagged in vitro translation products were separated by batch incubation with Glutathione Sepharose and MagneHis particles, respectively. According to PAGE analysis, highly purified proteins were obtained within one hour of incubation for both affinity purification protocols (Figure 3). The TEV protease cleavage site was tested under different conditions. In the first case, the purified proteins were eluted with appropriate



**Figure 3**  
**Affinity purification and cleavage of translated proteins. A.** Purification and cleavage of GSTAtMPK6: Molecular weight marker (M), Glutathione-Sepharose coupled kinase (B), AtMPK6 cleaved from the beads (T), AtMPK6 cleaved following elution (E). **B.** Purification and cleavage of HisAtMPK6: Molecular weight marker (M), MagneHis particle coupled kinase (B), AtMPK6 cleaved from the beads (T), AtMPK6 cleaved following elution (E). Proteins were translated by CEFC and bilayer method, respectively. A quarter of the total amount of purified protein was separated on 12% SDS-PAGE gel and detected by Coomassie Blue staining.

buffers and digested with His-tagged TEV protease. In the second case, the kinases were cut directly by TEV on the beads, without elution (Figure 3). The results demonstrated that the TEV protease worked effectively on both constructs under a wide range of conditions, since they were cleaved completely in different buffers, either coupled to beads or in solution.

#### Kinase activity of the purified protein kinase

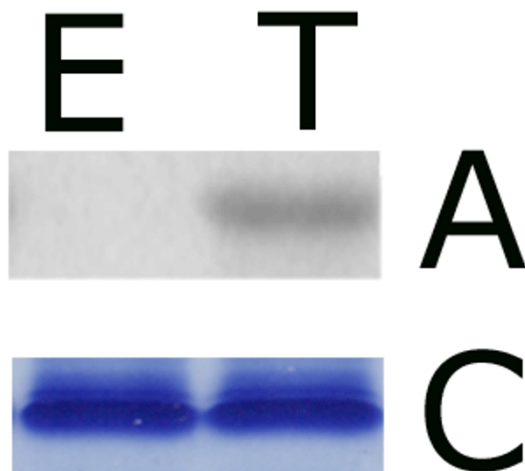
Previously, it has been demonstrated that 207 out of 439 wheat germ in vitro translated plant protein kinases displayed autophosphorylation activity [14]. In order to compare the in vitro kinase activities of proteins produced in *E. coli* and in a cell-free system, the His tagged *AtMPK6* cassette was transferred from pEU3-NII-HLIC into pET11a expression vector. The kinase was isolated by metal chelate affinity chromatography either from *E. coli* or from the in vitro translation reaction mixture. Equal amounts of His-*AtMPK6* were used to determine the in vitro kinase activities of overexpressed and translated proteins using myelin basic protein (MBP) as a substrate. According to autoradiography results, phospholabeling of MBP was

hardly detectable when bacterially overexpressed His-*AtMPK6* was tested, while the *in vitro* translated protein kinase displayed a clearly visible activity (Figure 4).

The high kinase activity of translated *AtMPK6* indicates proper folding of the kinase domain, although posttranslational modification(s) of the translated protein are also likely to be responsible for elevated kinase activity; indeed, proper phosphorylation of MAP kinases is essential to gain their full kinase activity and kinases present in wheat germ extract could perform these phosphorylations.

### Conclusion

We have constructed a set of four vectors to facilitate the cloning and purification steps of wheat germ extract protein *in vitro* translation systems. The presented vectors eliminate the traditional cloning steps and aid the purification of translated proteins by incorporation of a LIC site and a TEV cleavable affinity tag, respectively. Purification of a plant mitogen activated protein kinase demonstrated that the vectors functioned as intended. Furthermore, proper folding of the purified protein was indicated by



**Figure 4**  
**In vitro kinase activity of translated versus overexpressed *AtMPK6*.** MBP phosphorylation activity of *E. coli* overexpressed (E) and translated (T) *AtMPK6* was detected by autoradiography (A). Coomassie Blue staining shows equal loading of MBP (C). *AtMPK6* was either produced in *E. coli* or translated by bilayer method, and 100 ng of purified kinase was used in kinase reactions.

high *in vitro* kinase activity. We have successfully used our vectors for purification of proteins with different sizes from various organisms, too (data not shown). In summary, these vectors allow fast and parallel cloning and protein purification, and hence represent useful molecular tools for *in vitro* translation of eukaryotic proteins.

### Methods

#### Vector construction

The vectors pEU3-NII (Invitrotech) and pEU-E01 (Cell-Free Sciences) were used as backbones for plasmid construction. In order to remove the intrinsic *SspI* restriction endonuclease sites in pEU3-NII and pEU-E01, the vectors were mutated using Gene Tailor kit (Invitrogen) according to the provided manual with the 5'-ACTCTTCCITTTTCAATGTTATGAAGCA-3' and 5'-TGAAAAAGGAAGAGTATGAGTATTCA-3';

5'-CTTCCITTTTCAATGTTATTGAAGCATTATCAGG-3' and 5'-CCTGATAAATGCTTCAATAACATTGAAAAAGGAAG-3' primers, respectively.

The mutated vectors were further manipulated to produce four different constructs.

#### pEU3-NII-GLIC, pEU-E01-GLIC

The LIC site combined GST fragment was generated by PCR. pGEX-2T (GE Healthcare) was used as template with primers 5'-ACTAGTATGTCCCCTATACTAGGTT-3' and 5'-GGATCCGTTATCCACTTCCAATATTGGATTGGAAGTACAGGTTCTCATCCGATTTTGGAGGATGGTC-3'. The PCR product was digested with *BamHI* and ligated into the *EcoRV-BamHI* digested pEU3-NII *SspI*- vector, and transformed into DH10B competent cells. Ampicillin-resistant colonies were selected, and the purified plasmids were sequenced to confirm the PCR accuracy. The pEU-E01-GLIC plasmid was constructed by transferring GSTTEVLIC fragment from pEU3-NII-GLIC into pEU-E01 *SspI*- vector. The fragment was obtained by *SpeI-BamHI* digestion and gel purification. The isolated fragment was inserted into pEU-E01 *SspI*- vector treated with the same restriction endonucleases.

#### pEU3-NII-HLIC, pEU-E01-HLIC

The synthetic oligonucleotides

5'-TACTAGTATGCATCATCATCATCATGAGAACCTGTACTTCCAAT

CCAATATTGGAAGTGGATAACGGATCCA-3' and

5'-TGGATCCGTTATCCACTTCCAATATTGGATTGGAAGTACA

GGTTCTCATGATGATGATGATGATGCATACTAGTA-3'

encoding HisTEVLIC fragment were mixed, heated at 95°C for 30 sec, then incubated at 60°C for 3 minutes. The annealed, double stranded DNA was cut with *SpeI* and *BamHI*, and phenol-chloroform treatment of digested fragment was followed by ethanol precipitation. Finally, the fragment was ligated into *SpeI-BamHI* digested *Spl*-backbone vectors, and transformed into DH10B competent cells. The HisTEVLIC cassette comprising constructs were selected by colony PCR with primers specific for the backbone vectors:

pEUE01 forward: CGATTTAGGTGACACTATAGAAGCT

pEU3-NII forward: CACTATAGGGTACACGGAATTCCG

pEU rev: TATAGGAAGGCCGATAAGACC

#### Ligation independent cloning

The following primers were designed to amplify *AtMPK6* and append the sequences required for LIC:

5'-TACTTCCAATCCAATGCAATGGACGGTGGTTCAGGT-3' and

5'-TTATCCACTTCCAATGTGTTGAACGATCTGCAGTCA-3' (gene specific sequences are indicated in *italic*). A vector construct comprising C-terminal HA-tagged *AtMPK6* [15] was used as template. The resultant PCR product was cleaned up by PEG precipitation protocol [16].

20 µg of pEU-LIC vectors were hydrolyzed by 100 U *SspI* (Fermentas) for 2 hours at 37°C separated on agarose gel, and purified with QUIAquick Gel Extraction Kit (Qiagen). The cohesive ends were generated by T4 DNA polymerase (Promega) treatment. Briefly, 1 µg linearized vector or PCR product was incubated for 10 minutes at 37°C with 1 U enzyme in presence of provided buffer and 1 mM dGTP or dCTP, respectively. The reaction was stopped by heat inactivation for 20 minutes at 75°C. 60 ng vector and 30 ng PCR fragment resulting from T4 DNA polymerase treatment were mixed and adjusted to 12.5 µl final volume with 5 mM EDTA concentration. The annealing mixture was incubated at RT for 20 minutes. The annealing mix was directly transformed into competent cells.

#### Protein in vitro translation

2 µg of pEU-LIC*AtMPK6* constructs were used for mRNA synthesis, and the translation reactions were carried out according to the CEFC or bilayer protocol using commercial kits. In case of pEU3-NII backbone vector constructs, transcription and translation were done simultaneously at 23°C for 20 hours using RTS 100 WG CEFC Kit (Roche). Constructs originating from pEU-E01 vector were transcribed by SP6 RNA polymerase, and half of the mRNA

was added to the translation mixture of ENDEXT® Wheat Germ Expression S Kit (CellFree Sciences). Transcription and translation were carried out as described in manual, and protein translation took place at 23°C for 20 hours.

#### His affinity purification

The bilayer translation reaction mixture was incubated with 10 µl of MagneHis Protein Purification System (Promega) particles at 4°C for 30 minutes in 250 µl translation buffer completed with NaCl to 500 mM final concentration. After binding, the beads were washed five times with buffer containing 20 mM Tris, 10 mM imidazole, 500 mM NaCl, pH 7.5. The coupled His*AtMPK6* protein was removed from the beads either by elution with 20 mM Tris, 500 mM imidazole pH 7.5 buffer, or by cleavage with TEV protease treatment. TEV protease was purified essentially following a previously published protocol [17]. In order to directly digest kinase coupled to the beads, 2.5 µl beads were incubated with 1 µM TEV protease in washing buffer at 4°C, overnight. The eluted proteins were cleaved in elution buffer under the same condition.

#### GST affinity purification

The translation reaction mixture was incubated with 10 µl Glutathione Sepharose 4B at 4°C for 1 hour in translation buffer, and the resin was washed four times with PBS to expel unspecific proteins. GST*AtMPK6* was eluted either by 20 minutes incubation in 50 mM Tris, 20 mM Reduced Glutathione pH 8.0 at 4°C, or cleaved on beads by TEV protease. TEV protease treatments were performed as described above.

#### Production of *AtMPK6* by bacterial overexpression

In order to compare the kinase activities of *E. coli* produced *AtMPK6* and in vitro translated *AtMPK6*, the HisTEVLICMPK6 cassette was cloned into pET11a bacterial overexpression vector. Briefly, pEU-E01-HLICMPK6 was digested with *SpeI* and *BamHI*, and the resulting fragment was inserted into pET11a vector (Novagen) hydrolyzed with *NheI* and *BamHI* restriction endonucleases. The vector construct was transformed into *E. coli* BL21 (DE3) strain, and the cells were induced according to previously published protocol [18]. Briefly, the cells were grown at 37°C in 500 ml LB containing 100 µg/ml ampicillin until OD600 = 0.5, and incubated further 20 hours at 20°C with 0.1 mM IPTG (isopropyl-β-D-thiogalactopyranoside). Bacterial cells were collected by centrifugation at 4500 rpm for 20 minutes, resuspended in buffer containing 20 mM Tris, 500 mM NaCl, 10 mM imidazole, pH 8.0 and disrupted by sonication in the presence of 1 mM PMSF. Following centrifugation at 13000 rpm for 30 minutes the supernatant was mixed with 80 µl MagneHis particles for 30 minutes. Unspecific proteins were removed by washing the beads five times with lysis buffer,

and the bound protein was eluted with 80  $\mu$ l of 20 mM Tris, 500 mM imidazole pH 7.5.

#### Kinase assay

100 ng in vitro translated or *E. coli* overexpressed AtMPK6 protein was added to 20  $\mu$ l kinase assay mixture (25 mM Tris, 1 mM EGTA, 1 mM DTT, 5 mM MgCl<sub>2</sub>, 1 mM MnCl<sub>2</sub>, 20  $\mu$ M ATP, 1 mg/ml Myelin Basic Protein, 5  $\mu$ Ci [ $\gamma$ -<sup>32</sup>P]ATP, pH 7.5) [19]. The reaction mixture was incubated at room temperature for 30 minutes, then stopped by addition of 5  $\times$  Laemmli SDS buffer. The samples were separated on 15% SDS-PAGE gel and analysed by autoradiography.

#### Authors' contributions

VB and VG implemented the cloning, expression and translation studies, and participated in the design of inserted cassettes. TS and YE designed the original vectors and helped the translation studies with essential advices. TM conceived of studies, carried out the kinase assays and drafted the manuscript. All authors read and approved the final manuscript.

#### Acknowledgements

We gratefully thank for Anne Helfer for critically reading the manuscript. This work was supported by Marie Curie European Reintegration Grant (MERG-CT-2004-513623) and Hungarian Agency for Research Fund Management and Research Exploitation (BMEAPTA1).

#### References

- Thornton J: **Structural genomics takes off.** *Trends Biochem Sci* 2001, **26**:88-89.
- Sorensen HP, Mortensen KK: **Advanced genetic strategies for recombinant protein expression in Escherichia coli.** *J Biotechnol* 2005, **115**:113-28.
- Spirin AS: **High-throughput cell-free systems for synthesis of functionally active proteins.** *Trends Biotechnol* 2004, **22**:538-45.
- Endo Y, Sawasaki T: **Cell-free expression systems for eukaryotic protein production.** *Curr Opin Biotechnol* 2006, **17**:373-80.
- Sawasaki T, Ogasawara T, Morishita R, Endo Y: **A cell-free protein synthesis system for high-throughput proteomics.** *Proc Natl Acad Sci USA* 2002, **99**:14652-7.
- Kamura N, Sawasaki T, Kasahara Y, Takai K, Endo Y: **Selection of 5'-untranslated sequences that enhance initiation of translation in a cell-free protein synthesis system from wheat embryos.** *Bioorg Med Chem Lett* 2005, **15**:5402-6.
- Aslanidis C, de Jong PJ: **Ligation-independent cloning of PCR products (LIC-PCR).** *Nucleic Acids Res* 1990, **18**:6069-74.
- Aslanidis C, de Jong PJ, Schmitz G: **Minimal length requirement of the single-stranded tails for ligation-independent cloning (LIC) of PCR products.** *PCR Methods Appl* 1994, **4**:172-7.
- Kapust RB, Tozser J, Fox JD, Anderson DE, Cherry S, Copeland TD, Waugh DS: **Tobacco etch virus protease: mechanism of autolysis and rational design of stable mutants with wild-type catalytic proficiency.** *Protein Eng* 2001, **14**:993-1000.
- Tsunoda Y, Sakai N, Kikuchi K, Katoh S, Akagi K, Miura-Ohnuma J, Tashiro Y, Murata K, Shibuya N, Katoh E: **Improving expression and solubility of rice proteins produced as fusion proteins in Escherichia coli.** *Protein Expr Purif* 2005, **42**:268-77.
- Stols L, Gu M, Dieckman L, Raffin R, Collart FR, Donnelly MI: **A new vector for high-throughput, ligation-independent cloning encoding a tobacco etch virus protease cleavage site.** *Protein Expr Purif* 2002, **25**:8-15.
- Madin K, Sawasaki T, Ogasawara T, Endo Y: **A highly efficient and robust cell-free protein synthesis system prepared from wheat embryos: plants apparently contain a suicide system directed at ribosomes.** *Proc Natl Acad Sci USA* 2000, **97**:559-64.
- Sawasaki T, Hasegawa Y, Tsuchimochi M, Kamura N, Ogasawara T, Kuroita T, Endo Y: **A bilayer cell-free protein synthesis system for high-throughput screening of gene products.** *FEBS Lett* 2002, **514**:102-5.
- Sawasaki T, Hasegawa Y, Morishita R, Seki M, Shinozaki K, Endo Y: **Genome-scale, biochemical annotation method based on the wheat germ cell-free protein synthesis system.** *Phytochemistry* 2004, **65**:1549-55.
- Kovtun Y, Chiu WL, Tena G, Sheen J: **Functional analysis of oxidative stress-activated mitogen-activated protein kinase cascade in plants.** *Proc Natl Acad Sci USA* 2000, **97**:2940-5.
- Rosenthal A, Coutelle O, Craxton M: **Large-scale production of DNA sequencing templates by microtitre format PCR.** *Nucleic Acids Res* 1993, **21**:173-4.
- van den Berg S, Lofdahl PA, Hard T, Berglund H: **Improved solubility of TEV protease by directed evolution.** *J Biotechnol* 2006, **121**:291-8.
- Matsuoka D, Nanmori T, Sato K, Fukami Y, Kikkawa U, Yasuda T: **Activation of AtMEK1, an Arabidopsis mitogen-activated protein kinase kinase, in vitro and in vivo: analysis of active mutants expressed in E. coli and generation of the active form in stress response in seedlings.** *Plant J* 2002, **29**:637-47.
- Feilner T, Hultschig C, Lee J, Meyer S, Immink RG, Koenig A, Possling A, Seitz H, Beveridge A, Scheel D, et al: **High throughput identification of potential Arabidopsis mitogen-activated protein kinases substrates.** *Mol Cell Proteomics* 2005, **4**:1558-68.

Publish with **BioMed Central** and every scientist can read your work free of charge

"BioMed Central will be the most significant development for disseminating the results of biomedical research in our lifetime."

Sir Paul Nurse, Cancer Research UK

Your research papers will be:

- available free of charge to the entire biomedical community
- peer reviewed and published immediately upon acceptance
- cited in PubMed and archived on PubMed Central
- yours — you keep the copyright

Submit your manuscript here:  
http://www.biomedcentral.com/info/publishing\_adv.asp

