

RESEARCH ARTICLE

Open Access

# Identification of immunogenic proteins and generation of antibodies against *Salmonella* Typhimurium using phage display

Torsten Meyer<sup>1</sup>, Thomas Schirrmann<sup>1</sup>, André Frenzel<sup>1</sup>, Sebastian Miethe<sup>1</sup>, Janin Stratmann-Selke<sup>2,3</sup>, Gerald F Gerlach<sup>2</sup>, Katrin Strutzberg-Minder<sup>2</sup>, Stefan Dübel<sup>1</sup> and Michael Hust<sup>1\*</sup>

## Abstract

**Background:** Solely in Europe, *Salmonella* Typhimurium causes more than 100,000 infections per year. Improved detection of livestock colonised with *S. Typhimurium* is necessary to prevent foodborne diseases. Currently, commercially available ELISA assays are based on a mixture of O-antigens (LPS) or total cell lysate of *Salmonella* and are hampered by cross-reaction. The identification of novel immunogenic proteins would be useful to develop ELISA based diagnostic assays with a higher specificity.

**Results:** A phage display library of the entire *Salmonella* Typhimurium genome was constructed and 47 immunogenic oligopeptides were identified using a pool of convalescent sera from pigs infected with *Salmonella* Typhimurium. The corresponding complete genes of seven of the identified oligopeptides were cloned. Five of them were produced in *E. coli*. The immunogenic character of these antigens was validated with sera from pigs infected with *S. Typhimurium* and control sera from non-infected animals. Finally, human antibody fragments (scFv) against these five antigens were selected using antibody phage display and characterised.

**Conclusion:** In this work, we identified novel immunogenic proteins of *Salmonella* Typhimurium and generated antibody fragments against these antigens completely based on phage display. Five immunogenic proteins were validated using a panel of positive and negative sera for prospective applications in diagnostics of *Salmonella* Typhimurium.

## Background

*Salmonella spec.* is a genus of the *Enterobacteriaceae*. Two species are in the genus *Salmonella*: *S. bongori* and *S. enterica* [1]. *Salmonella enterica* is classified in serogroups and serovars on the basis of their O- and H-antigens (somatic and flagellar antigens) [2,3]. So far, 2800 *Salmonella enterica* gene families and more than 2500 serovars are known. More than 1500 serovars belong to the subspecies *Salmonella enterica* subspecies *enterica* [4]. These pathogens cause foodborne gastrointestinal infections, usually through raw poultry and pork, but it can also be found in non-alcoholic beer or seafood. The subspecies *enterica* is the cause of 99% of human *Salmonella*

infections. The prevalent serovars are Typhimurium and Enteritidis [4-7]. The most reported phage types for *Salmonella* Typhimurium are DT193, U302 and DT104. Infections with the latter two phage types increased in 2009 [5]. Human infections with phage type DT104 are particularly critical, because these strains are resistant to most of the commonly used antibiotics [6]. In Europe, *Salmonella* caused more than 130,000 reported infections in 2008 and 108,614 cases in 2009. In the US more than a million cases are estimated to occur [5,8].

Improved detection of livestock colonised with *S. Typhimurium* would be very helpful to prevent foodborne diseases. In particular, infections in swine are difficult to diagnose, because the animals develop either no or only slight symptoms [9]. Only through continuous monitoring of the herds infections of humans can be prevented. Established methods for *S. Typhimurium* diagnostics are classically time-consuming, using microbiological cultures on

\* Correspondence: m.hust@tu-bs.de

<sup>1</sup>Technische Universität Braunschweig, Institut für Biochemie, Biotechnologie und Bioinformatik, Abteilung Biotechnologie, Spielmannstr.7, 38106 Braunschweig, Germany

Full list of author information is available at the end of the article

different liquid and solid media [10,11], specific fluorescence labeled DNA probes [12], PCR [13] or recently, a quantum dot-based bead assay [14]. Currently, high throughput diagnostic of *S. Typhimurium* is performed by indirect ELISA [9,15,16]. The commercially available ELISA kits e. g. SALMOTYPE<sup>®</sup>- or Enterisol<sup>®</sup>-ELISA use a mixture of O-antigens of *Salmonella enterica* subspecies *enterica* serovars. They are based on the system established by Nielson et al. [15]. Because of this mixture, cross-reactions occur with other bacteria [15]. In addition, the sensitivity varies between the different ELISA assays [17]. For a sensitive and specific ELISA, immunogenic and species specific proteins are required [18]. The improvement of detection methods, as well as the development of new vaccines would be facilitated by the identification, characterisation and validation of previously unknown immunogenic proteins.

The most common method for the identification of immunogenic proteins is 2D-PAGE of cultured bacterial pathogens and immunoblot using sera from infected patients or animals followed by mass spectrometry or microsequencing [19-24]. However, this method is limited. Differentially expressed proteins, e.g. dependent on pathogen-host interaction, can not be detected. Furthermore, weakly expressed antigens may also not be identified. In these cases, antigen phage display may circumvent these limitations. Our approach for the identification of immunogenic proteins is phage display. Phage display technology was invented by George P. Smith [25]. This methods can be used both for the selection of antibodies [26-29] and for the identification of immunogenic proteins from genomic or cDNA libraries [30-34]. Here, the cloning of randomly fragmented genomic DNA or cDNA into phage display vectors should allow, in theory, the display of all polypeptides encoded by the genome of the donor or all polypeptides encoded by the transcriptome of the donor, respectively [35,36]. In this study, we combined the identification of immunogenic proteins by M13 phage display using genomic libraries from *S. Typhimurium* with the selection of open reading frames without any subcloning steps (Figure 1 left part) in order to improve the library quality [37,38].

Afterwards, the genes corresponding to the identified immunogenic oligopeptides were cloned and produced in *E. coli* (Figure 1 middle part). Using our phage display based pipeline for the generation of human antibodies [39], we were able to generate human, recombinant antibodies against these antigens (Figure 1 right part).

## Results

### Generation of the *Salmonella Typhimurium* genomic phage display library

Sonication of *Salmonella* DNA did not lead to clonable DNA fragments, whereas the sonication of *E. coli* DNA

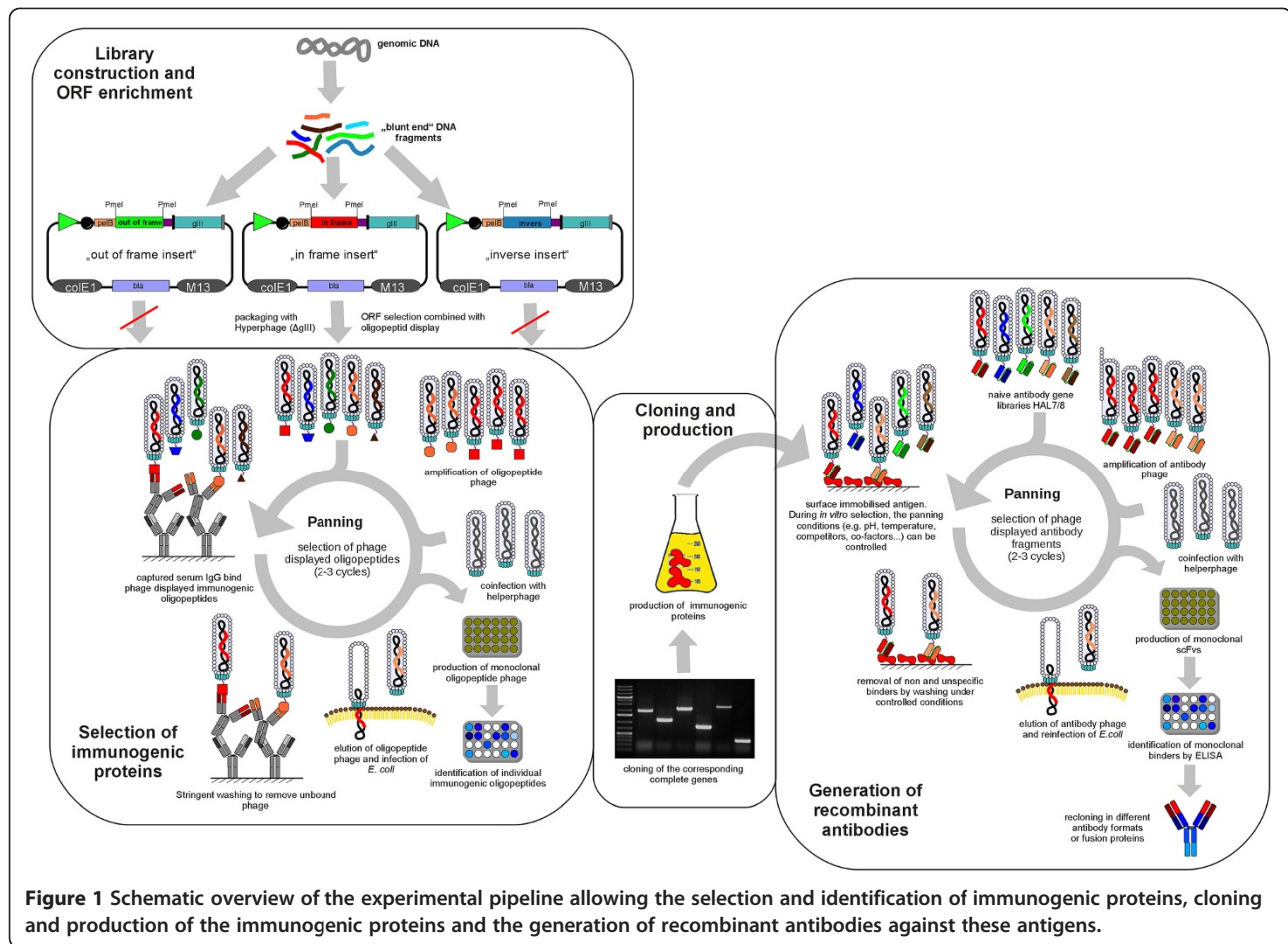
as a control could be cloned without problems (data not shown). Therefore, genomic DNA was digested with a mixture of the 4 base pair cutters *DpnI* and *AluI* and the 6 base pair cutter *AfeI* to construct the *Salmonella Typhimurium* genome library (Figure 2A). The digested DNA was cloned into pHORF3 [38] resulting in a library with  $1.6 \times 10^6$  independent clones. The insert rate and size was analysed by colony PCR (Figure 2B), which indicated that more than 90% of the clones contain an insert. The shortest inserts had a size of about 40 bp while the longest inserts had a length of 2500–3000 bp with an average length of about 500–800 bp. For the selection of open reading frames, the library was packaged with Hyperphage [37,40,41]. The packaged library was also analysed by colony PCR (Figure 2C) resulting in shorter DNA fragments compared to the initial library.

### Selection of immunogenic *Salmonella Typhimurium* oligopeptides

Pooled convalescent serum from pigs infected with *Salmonella Typhimurium* was used for the panning procedure. In total, two panning rounds were performed and 184 oligopeptide phage clones were analysed by ELISA for binding to serum IgGs. 58 oligopeptide phage clones with different gene fragments were found to bind to the porcine convalescent serum IgGs but not to the control serum IgGs. For 19 gene fragments, no homologous NCBI database hit was found. 31 of the identified proteins showed a higher similarity to other *Salmonella enterica* serovars (Table 1). One of the selected gene fragments showed the best NCBI database hit to *Salmonella Typhimurium*, but the gene fragment was not in frame (Table 2). Seven oligopeptide phage clones with a good signal to noise ratio (three- to four-fold over background) in the ELISA and the highest homology to genes from *Salmonella enterica* spp. *enterica* serovar *Typhimurium* were selected for further characterisation (Table 3). Binding of the oligopeptide phage to convalescent serum IgGs, including the non-*Salmonella Typhimurium* hits and the out of frame *Salmonella Typhimurium* hit, was verified in an additional ELISA with piglet serum as negative control (data not shown).

### Cloning of the complete ORFs of the identified oligopeptides and antigen production

The corresponding complete protein coding sequence of the identified gene fragments was amplified from genomic DNA (Figure 3A) and cloned into pET21A+. When the ORF contained a leader peptide, it was replaced by the pelB leader peptide by cloning into pET21A + pelB. It was not possible to amplify the putative carbohydrate kinase encoding gene from the genomic DNA. The antigens were produced in 500 mL scale shake flasks, purified by IMAC and verified by SDS-PAGE (Figure 3B). Five of six antigens



cloned into pET21A+ were produced and purified successfully. It was not possible to produce the hypothetical protein STM14.

#### Analysis of the identified immunogenic proteins with different pig sera

The five full size antigens were tested with sera from ten *Salmonella Typhimurium* positive classified pigs, using the commercial SALMOTYPE Pig Screen ELISA, and sera from four negative classified pigs. In addition, they were tested with the pooled immune positive sera used for the selection procedure and with a piglet serum as negative control (Figure 4).

9 out of 10 positive sera bound better to the antigen putative dihydroxyacid dehydratase compared to the negative sera. This means, that 9 of the 10 positive sera had a higher ELISA O.D. value compared to the negative serum with the highest ELISA O.D. value.

7 out of 10 positive sera bound better to the antigen putative electron transfer protein alpha compared to the negative sera. The pooled immune sera (positive control) contained either more or better binders against the

antigens than any of the individual positive classified samples.

7 out of 10 positive sera bound better to the antigen 2,4-dienyl-CoA-reductase compared to the negative sera. Here, the piglet serum revealed a high antigen binding capacity compared to the mixture of positive sera.

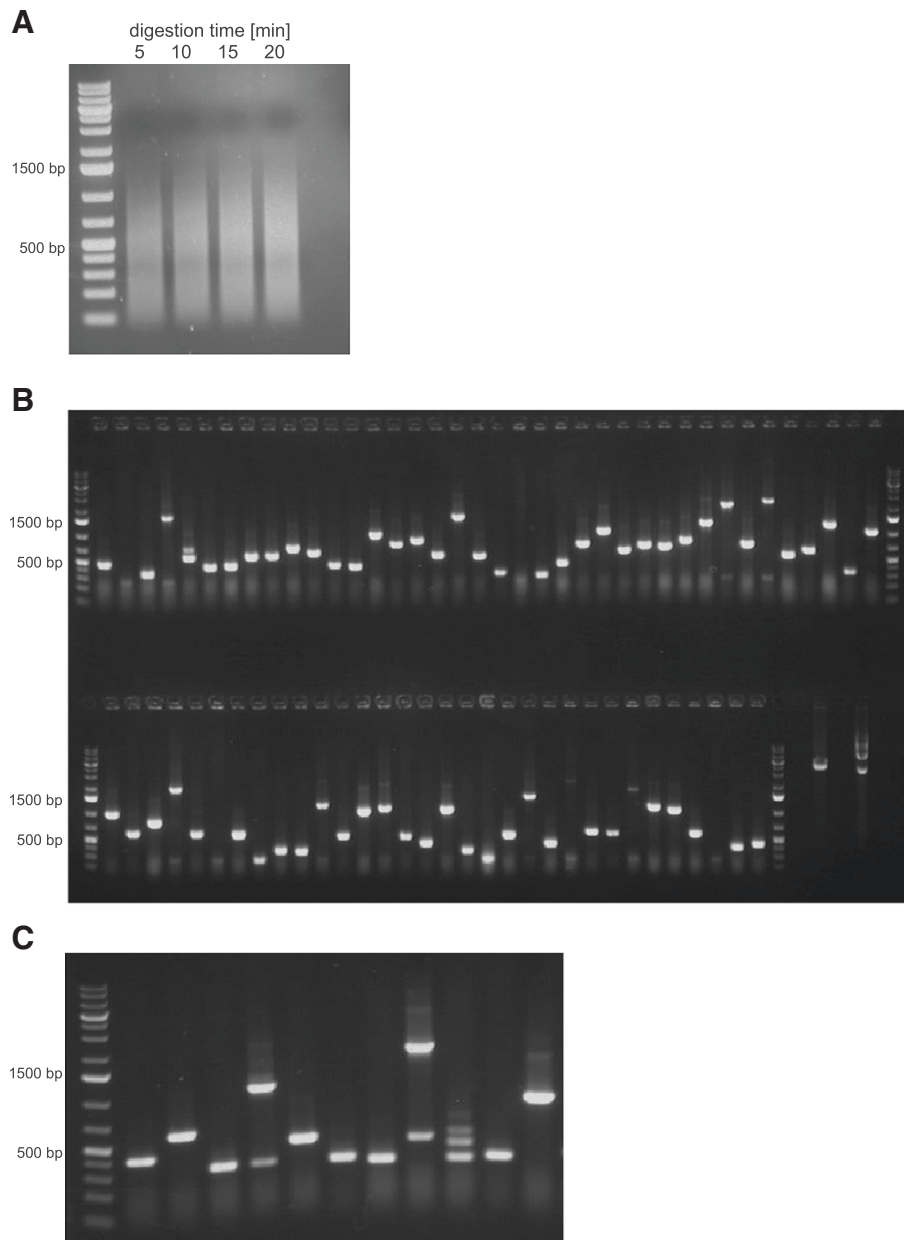
8 out of 10 as positive classified sera bound better to the antigen phage tail-like protein compared to the negative classified sera.

8 out of 10 as positive classified sera bound better to the antigen putative dimethyl sulphoxide reductase compared to the negative classified sera.

Not all individual positive sera bound significantly better than all four individual negative sera. However, in general the positive sera showed better binding to all identified immunogenic proteins compared to the negative sera.

#### Generation of recombinant human antibodies against the identified immunogenic proteins

Antibody fragments against all five antigens were selected using the human naive antibody gene library



**Figure 2** A agarose gel of the digested genomic DNA of *Salmonella Typhimurium*. B agarose gel of a colony PCR of the cloned genomic fragments. C agarose gel of a colony PCR of the inserts of Hyperphage packed phagemids.

HAL7/8 [39]. Monoclonal binders were identified by antigen ELISA using soluble scFv fragments (data not shown). These binders were sequenced to identify unique binders and analysed using VBASE2 ([www.vbase2.org](http://www.vbase2.org)) [42]. Human antibodies were successfully generated against all five antigens.

The best binders were recloned into the pOPE101-XP vector [43], produced in 1.6 L scale in the LEX system and IMAC purified (Table 4). The yields were between 0.5 mg/L and 12 mg/L. Afterwards, the purified scFv were analysed by titration ELISA (Figure 5). The EC<sub>50</sub>

values of the scFv (monovalent) are given in Table 4. For four scFv it was not possible to determine the EC<sub>50</sub>, since the maximal binding was not reached in the titrations ELISA.

#### Analysis scFv binding to *Salmonella* proteins by immunoblot

Binding to linear epitopes was analysed by SDS-PAGE of the antigens, followed by a Western Blot and an immunostain using the purified scFv. All binders to putative dihydroxyacid dehydratase, phage tail-like protein and



**Table 1 Selected immunogenic *Salmonella enterica* proteins (without *Salmonella* serovar Typhimurium), including in frame and out of frame with gIII gene fragments**

Protein	In frame with gIII	pHORF 3 insert size [bp]	NCBI reference sequence	Assigned <i>Salmonella</i> serovar
ATP-dependent Clp protease ATP-binding subunit	yes	232	ZP_04657262	Tennessee
outer membrane ferrichrome receptor protein precursor	yes	58	YP_002635837	Paratyphi C
Rhs-family protein	yes	100	ZP_04657793	Tennessee
hypothetical protein SentesTyphi_03066	yes	294	ZP_03357516	Typhi
crotonobetaine/carnitine-CoA ligase	no	135	YP_002635709	Paratyphi C
transposase B	no	144	ZP_03224077	Kentucky
DNA polymerase I	no	348	ZP_03381877.	Typhi
nitrate reductase 2, gamma subunit	no	89	ZP_03366843	Typhi
putative phage terminase, large subunit	no	648	YP_002216031	Dublin
putative electron transfer flavoprotein alpha subunit	yes	58	YP_002636467	Paratyphi C
hypothetical protein	no	414	ZP_06535866	Typhi
<i>Salmonellaentericaenterica</i> _12643				
exonuclease V subunit gamma	no	86	ZP_04653610	Tennessee
bacteriophage Mu tail sheath protein	no	182	ZP_02663881	Schwarzen-grund
pts system, glucose-specific iibc component	no	109	ZP_02670079	Heidelberg
flagellar basal body P-ring protein	no	60	ZP_03371027	Typhi
hth-type tranScriptional regulator	no	710	ZP_02698922	Newport
DNA mismatch repair protein	yes	122	YP_002638485	Paratyphi C
colanic acid biosynthesis protein WcaK	no	270	ZP_02830210	Weltrevreden
outer membrane fimbrial usher protein	yes	171	ZP_03336471	Typhi
uroporphyrinogen-III synthase	yes	49	ZP_03385917	Gallinarium
ATP-dependent metalloprotease	yes	130	ZP_03385917	Typhi
aminoglycoside/multidrug efflux system	yes	67	ZP_04657455.	Tennessee
penicillin-binding protein	no	56	ACN47454	Paratyphi C
C32 tRNA thiolase	yes	123	ZP_03365647	Typhi
hypothetical protein SG0660	no	324	YP_002225743.	Gallinarium
putative LysR-family transcriptional regulator	no	48	AET55395	Gallinarium
23 S rRNA methyluridine methyltransferase	yes	214	ZP_03356931	Typhi
hypothetical protein SeHA_C2934	yes	55	YP_002046718	Heidelberg
putative transport protein	yes	55	ACN44236.	Paratyphi C
hypothetical protein SPC_0823	yes	61	ZP_03365355	Typhi
nitrate reductase, alpha subunit	yes	298	ZP_03217505	Virchow

putative dimethyl sulphoxide reductase bound linear epitopes. Three of the four binders to putative electron transfer protein alpha and the binder against 2,4-

dienoyl-CoA-reductase did not bind in the immunoblot (Table 4).

**Table 2 Selected immunogenic *Salmonella* Typhimurium proteins with out of frame gene with gIII fragments in pHORF3**

Protein	pHORF3 insert size [bp]	NCBI reference sequence
maltose ABC transporter periplasmic260 protein		NP_463094

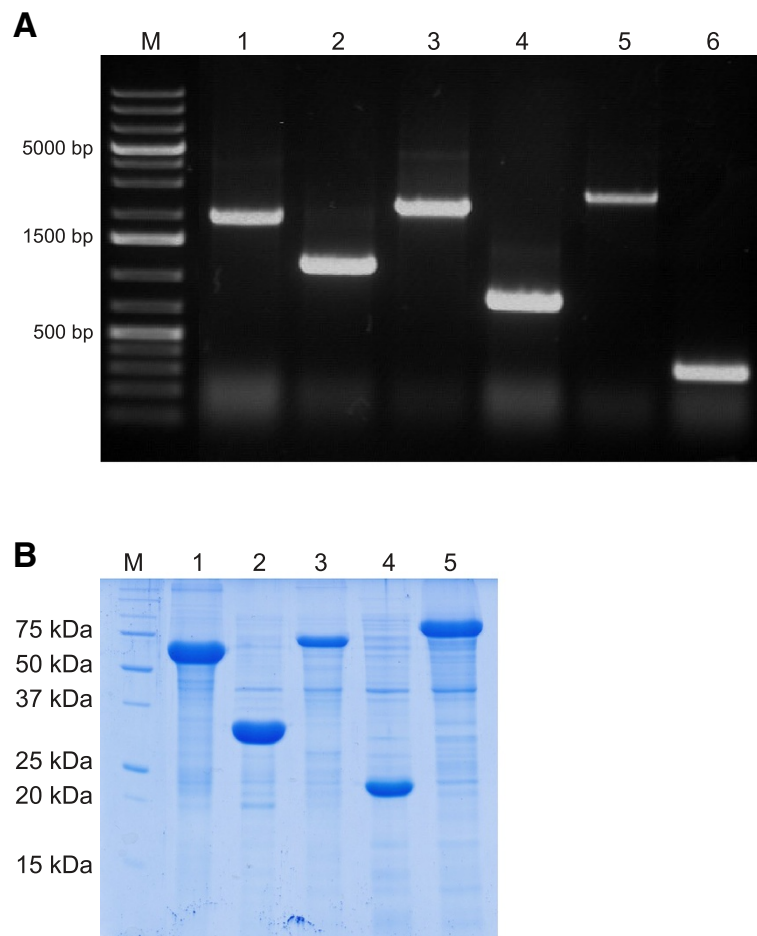
## Discussion

Antibody phage display for generation of recombinant antibody fragments [39,44-47] and the identification of immunogenic proteins by phage display [30-32,38,48,49] are established methods. But in this work, for the first time a complete phage display based pipeline from antigen identification to the generation of the corresponding antibody fragments was shown. Oligopeptide phage

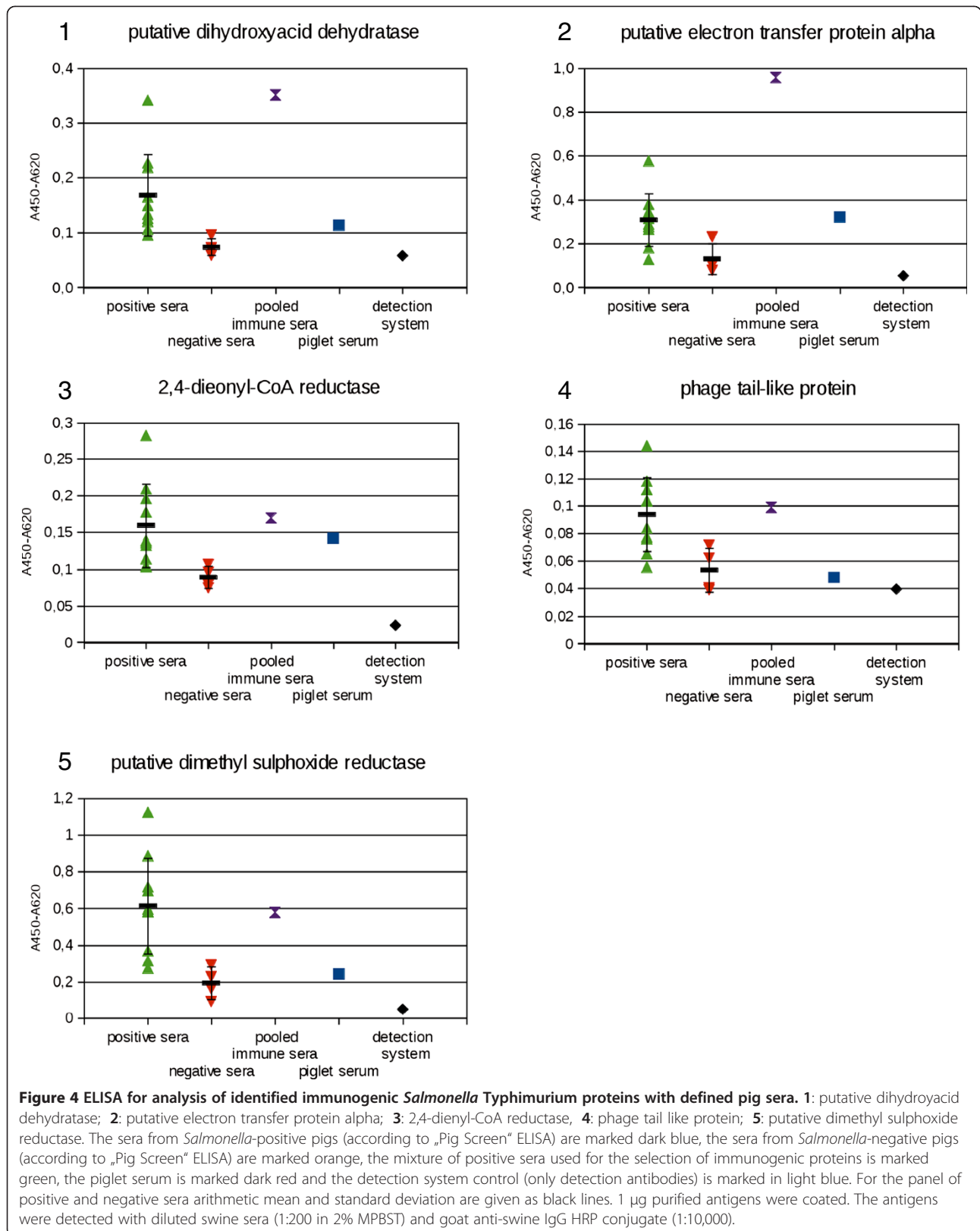
**Table 3 Selected immunogenic *Salmonella* Typhimurium proteins**

Protein	pHORF3 insert size [bp]	NCBI reference sequence	Molecular mass complete protein [kDa]
putative dihydroxyacid dehydratase	118	NP_462432	62
putative electron transfer protein alpha	58	NP_459833	33
2,4-dienoyl-CoA-reductase	52	NP_462133	73
phage tail-like protein	70	NP_461635	23
putative dimethyl sulphoxide reductase	148	NP_460459	90
hypothetical protein STM14	58	ACY86745	7
putative carbohydrate kinase	40	CBG27384	72

display technology can expand the identification of immunogenic proteins compared to 2D-PAGE followed by mass spectrometry or microsequencing [32,38,48,50]. The identification of immunogenic proteins via oligopeptide phage display is independent of the natural expression rate of the immunogenic protein, which also allows the identification of low abundant proteins or proteins only produced in host-pathogen interactions. A disadvantage could be that only oligopeptides can be selected which can be secreted by the SEC pathway [38]. Interestingly, when using sonicated *S. Typhimurium* DNA, the transformation rates were in the range of  $10^2$  -  $10^4$  clones per transformation. This is very low compared to the transformation rates of  $10^5$  for sonicated genomic DNA of *Mycoplasma hyopneumoniae* or  $10^6$  clones for *E. coli* [38]. Hence, the sonication method appeared to be not applicable for some bacteria species or strains when constructing genomic libraries.



**Figure 3 A** agarose gel of seven PCR amplified identified genes. M: marker; 1: putative dihydroxyacid dehydratase; 2: putative electron transfer protein alpha; 3: 2,4-dienyl-CoA reductase, 4: phage tail like protein; 5: putative dimethyl sulphoxide reductase; 6: hypothetical protein STM14. **B** SDS-PAGE (12%) of five  $\mu$ L elution fraction of six IMAC purified immunogenic proteins. M: marker; 1: putative dihydroxyacid dehydratase; 2: putative electron transfer protein alpha; 3: 2,4-dienyl-CoA reductase, 4: phage tail like protein; 5: putative dimethyl sulphoxide reductase.



**Table 4 Characterisation of antibody fragments generated against *Salmonella* Typhimurium antigens. n.d. = EC50 not determined**

scFv	Target	VH	VL	Yield [mg/L]	EC50 [nM]	EC 50 [µg/mL]	Immuno-blot
TM228.2.3-B1	putative dihydroxyacid dehydratase	IGHV3-48*03	IGLV3-19*01	3.8	40	1.2	yes
TM228.2.3-D9	putative dihydroxyacid dehydratase	IGHV3-23*01	IGLV1-50*01	8.4	160	4.6	yes
TM228.2.3-H7	putative dihydroxyacid dehydratase	IGHV1-18*01	IGLV3-19*01	12.0	310	9.4	yes
TM228.3.3-A5	putative electron transfer protein alpha	IGHV1-46*01	IGLV7	4.3	78	2.3	yes
TM228.3.3-C5	putative electron transfer protein alpha	-	IGLV3-21*02	7.9	n.d.	n.d.	no
TM228.3.3-D3	putative electron transfer protein alpha	IGHV5-51*01	IGLV3-1*01	7.6	n.d.	n.d.	no
TM228.3.3-F10	putative electron transfer protein alpha	IGHV1-46*01	IGLV3-19*01	0.5	n.d.	n.d.	no
TM228.4.3-A4	2,4-dienoyl-CoA-reductase	IGHV3-15*01	IGLV3-19*01	1.3	310	9.4	no
TM228.5.3-G7	phage tail-like protein	IGHV1-2*02	IGLV1-47*01	7.4	310	9.4	yes
TM228.6.3-A12	putative dimethyl sulphoxide reductase	IGHV1-69*01	IGLV3-19*01	1.1	n.d.	n.d.	yes
TM228.6.3-C5	putative dimethyl sulphoxide reductase	IGHV4-31*03	IGLV1-44*01	1.5	625	18.8	yes
TM228.6.3-H2	putative dimethyl sulphoxide reductase	IGHV4-59*01	IGLV1-44*01	2.8	625	18.8	yes

The V genes are given according to VBASE2 ([www.vbase2.org](http://www.vbase2.org)).

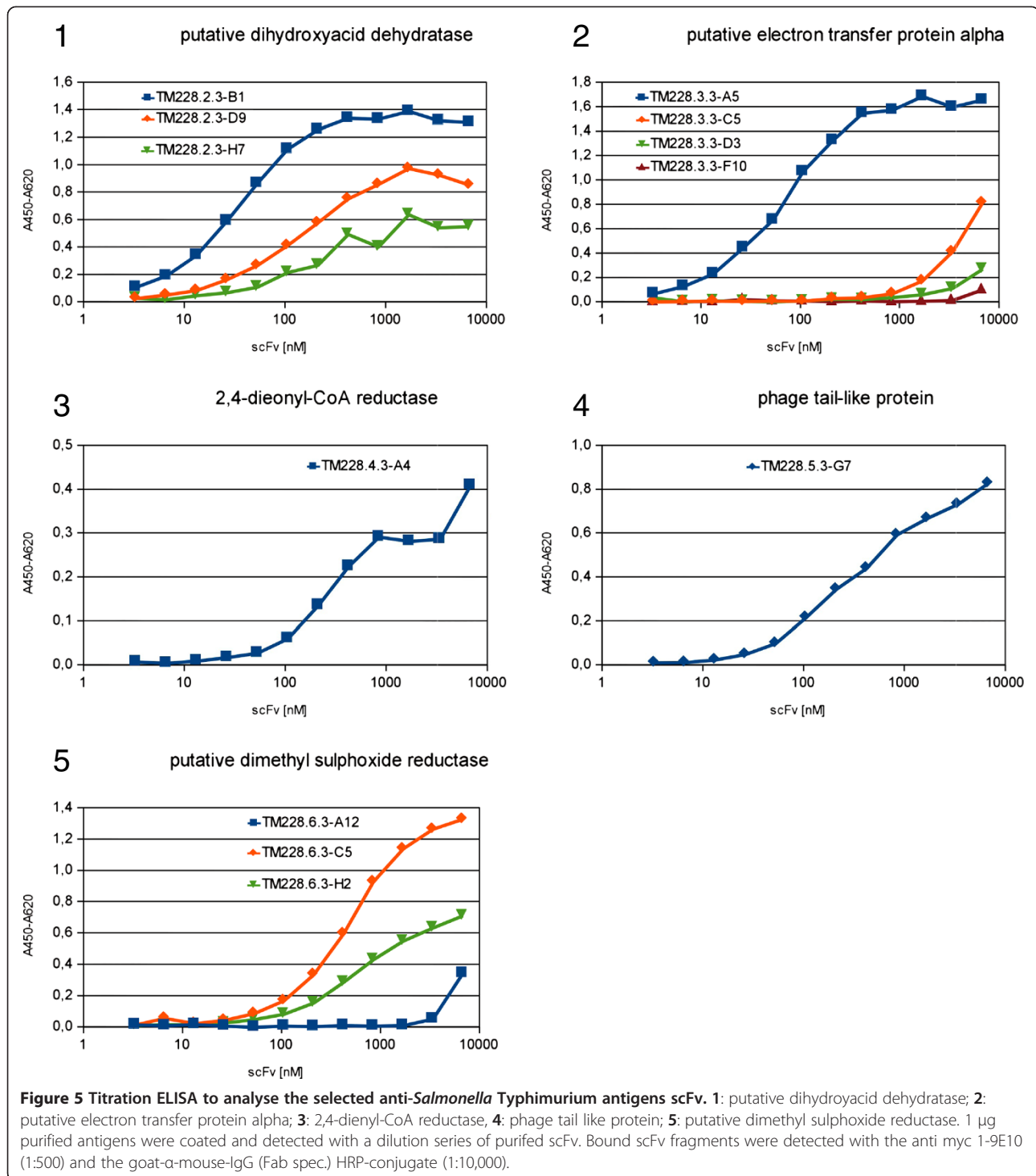
In this work, 58 different oligopeptides were bound by convalescent serum from pigs infected with *Salmonella* Typhimurium. Interestingly, many of the encoding gene fragments were not in frame with gIII and therefore, in theory, should not result in the production of functional oligopeptide-pIII fusion proteins. However, similar observations, that gene fragments encoding oligo- or polypeptides frequently contain frameshifts, have been described previously for selections by phage display [37,51]. For +1 frameshifts it is reported that oligo- or polypeptides are still displayed on phage particles with the same amino acid sequence as the corresponding constructs without a frameshift. One suggested explanation of this effect was the occurrence of RNA secondary structures. A second explanation could be the selection pressure against oligo- or polypeptides which are toxic for *E. coli* and thus may lead to a negative selection against these potential toxic proteins [52].

The most frequently identified oligopeptides did not show the best match with the *Salmonella* serovar Typhimurium (NCBI taxonomy IDs: 99287, 588858 and 568708), but instead with other *Salmonella* serovars. These antigens with a higher homology to other *Salmonella* serovars, could be interesting for further analyses. However in this work, we focused on the seven antigens with the highest homology to *Salmonella* Typhimurium. In contrast to former selections of immunogenic proteins using the pHORF system, where both new and known immunogenic proteins were selected [32,38], these seven antigens have not been described as immunogenic before. So far, five immunogenic proteins of *S. Typhimurium* were found using 2D-PAGE [53]. Putative dihydroxyacid dehydratase, putative dimethyl sulphoxide reductase and hypothetical protein STM14 of

*Salmonella* Typhimurium have not been described as immunogenic before. The putative electron transfer protein alpha [54] is located on a pathogenicity island [55]. To date, 2,4-dienoyl-CoA-reductase of *S. Typhimurium* has not been identified as immunogenic, but interestingly, humans exhibiting anti-mitochondrial autoantibodies (AMA-positive), have also antibodies against the human 2,4-dienoyl-CoA-reductase [56]. For the phage tail-like protein, a bactericidal activity is described for some bacteria, e.g. *Pseudomonas* [57]. Immunogenic proteins from *S. Typhimurium*, which are used for diagnostics, are only rarely described in the literature. Described are OmpD [58] and a preparation of flagelates [59] for ELISA diagnostics. For nanobead based assays polyclonal antibodies against *Salmonella* were used whereupon the detailed antigens are unknown [14]. The V genes of the selected scFv against the five immunogenic proteins are mainly derived from the HV families 1 and 3 and from the LV families 1 and 3. Member of these gene families are preferentially selected from naive scFv libraries [60,61]. Only scFv with a lambda VL but no kappa VL were selected. Interestingly, also one VL domain only binder was selected. This is an artefact from library cloning since the insert rate of HAL7 is not 100% [39]. Functional VL domain dAbs have been described before [62].

The gold standard for diagnostics of *Salmonella* infections is microbiological culture [18]. Currently, for high throughput detection of *S. Typhimurium*, ELISA is the ideal method [9,15,16,58]. The commercially available ELISA kits use a mixture of O-antigens (LPS) or total cell lysate of *Salmonella enterica* subspecies *enterica* serovars. This mixture of antigens causes, cross-reactions with other bacteria [9,18]. A





comparison of four different ELISA detection systems showed “both sample matrices, blood sera and meat juice, are suitable for antibody detection. However, the test sensitivity mainly depends on the respective cut-off used for the specific test” and “our findings indicate that the currently used LPS-ELISA systems have

diagnostic uncertainties...” [9]. The use of one or a defined mixture of the selected immunogenic proteins and the corresponding antibody fragments will be useful to establish an ELISA based diagnostic kit with a higher specificity compared to the commercially available diagnostic kits.

## Methods

### Construction of the *Salmonella* Typhimurium genomic phage display library

*Salmonella* Typhimurium was cultivated in 2xTY medium [63] overnight at 34°C and 250 rpm. For isolation of genomic DNA, 6x 3 ml of the culture were used. The isolation was performed with the Quiaamp DNA Mini Kit according to the manufacturer's instructions (Qiagen, Hilden, Germany). After purification, the DNA was digested for 35 min using three different blunt end-cutting restriction endonucleases (*AluI*, *AfeI*, *DpnI*) (NEB, Frankfurt, Germany). DNA fragments with a size up to 1200 bp, were used for cloning into the *PmeI*-restricted vector pHORF3 [38]. The ligated plasmids were transformed into *E. coli* Top10 F' (Invitrogen, Karlsruhe, Germany) by electroporation.

### Enrichment of ORFs using Hyperphage

The enrichment of ORFs in the *S. Typhimurium* genomic library requires the display of the corresponding polypeptides on phage particles for the panning. Therefore, the library was packaged using Hyperphage [40,41] as described previously [37,38].

### Colony PCR

*E. coli* clones bearing pHORF3 were analysed by colony PCR using the primers MHLacZPro\_f (5' GGCTCGTATG TTGTGTGG 3'), MHgIII\_r (5' GGAAAGACGACAAAA CTTTAG 3'), and the following protocol: 94°C 1 min, 56°C 0.5 min, 72°C 1.5 min, 25 cycles. The DNA was separated by 1% Agarose gel electrophoresis.

### Selection of immunogenic oligopeptides (Panning)

The panning was performed by following the protocol described before [38] with modifications. Six wells of a MaxiSorp<sup>®</sup> 96-well microtitre plate (MTP; Nunc, Wiesbaden, Germany) were coated with 150 µL 5 µg/mL goat anti-swine IgG in PBS [63] overnight. The wells were washed with phosphate buffered saline (PBS) supplemented with 0.1% Tween20 (PBST) (Roth, Karlsruhe, Germany). Afterwards, they were blocked with PBST supplemented with 2% (w/v) skim milk powder (2% MPBST) for 1 h. In parallel, several wells of a MaxiSorp<sup>®</sup> plate were coated with 150 µL  $1 \times 10^{11}$  cfu/mL Hyperphage in PBS overnight and blocked with 2% MPBST for 1 h. All washing steps were performed three times using PBST buffer and an enzyme-linked immunosorbent assay (ELISA) washer (Tecan Columbus, Crailsheim, Germany). A swine serum mixture (obtained from pigs after infection with *S. Typhimurium* and field sera) was diluted 1:10 in 2% MPBST and pre-incubated on MaxiSorp<sup>®</sup> MTP wells coated with Hyperphage for 1 h at RT, to remove serum IgG binding to the helper-phage. After pre-incubation, the swine serum was

incubated in goat anti-swine IgG-coated MTP wells for 2 h. After washing,  $5 \times 10^{10}$  cfu polypeptide phage particles of the Hyperphage-packaged *Salmonella* Typhimurium genomic library were incubated on the captured swine IgGs for 2 h. For the following panning rounds, 100 µL of amplified phage of the previous panning round were used. The non-binding polypeptide phage particles were removed by ten stringent washing steps. In the second and third panning round, the number of washing steps was increased to 20 and 30, respectively. Elution of bound phage particles was performed using 200 µL of 10 µg/ml trypsin (10 µg/mL trypsin in PBS) for 30 min at 37°C. Ten microlitres of the eluted phage solution were used for titration. Twenty millilitres of the *E. coli* TOP10 F' cells were grown to an OD<sub>600</sub> of 0.4 - 0.5 which were then infected with the remaining 190 µL of the eluted phage solution and incubated for 30 min at 37°C. Afterwards, the cells were harvested by centrifugation for 10 min at 3.220 × g. The bacterial pellet was resuspended in 250 µL 2 × TY medium (1.6% [w/v] tryptone, 1% [w/v] yeast, 0.5% [w/v] NaCl) containing 100 mM glucose and 100 µg/mL ampicillin (2 × TY-GA), plated onto 15 cm 2 × TY-GA agar plates and incubated overnight at 37°C. Grown colonies were harvested in 5 mL 2 × TY-GA medium using a Drigalsky spatula. Fifty millilitres of 2 × TY-GA medium were inoculated with 200 µL bacteria culture and grown to an OD<sub>600</sub> of 0.4-0.5 at 37°C and 250 rpm in a shaking incubator. Five millilitres of bacterial culture corresponding to about  $\sim 2.5 \times 10^9$  cells were infected with  $5 \times 10^{10}$  cfu Hyperphage, incubated at 37°C for 30 min without shaking and another 30 min with shaking at 250 rpm. The infected cells were harvested by centrifugation for 10 min at 3.220xg. The pellet was resuspended in 30 mL 2xTY medium containing 100 µg/mL ampicillin and 50 µg/mL kanamycin (2 × TY-AK). Phage particles were produced at 30°C and 250 rpm overnight. On the following day, the supernatant containing phage particles was collected.

### Production of individual oligopeptide phage clones for screening

For phage production, polypropylene 96-well U bottom plates (Greiner bio-one, Frickenhausen, Germany) containing 175 µL 2xTY-GA per well were inoculated with single *E. coli* colonies from the phage titration plates of the third panning round and incubated at 37°C with constant shaking at 850 rpm (thermo shaker PST60-HL4, lab4you, Berlin, Germany) overnight. A new plate with 165 µL 2xTY-GA per well was inoculated with 10 µL of the overnight cultures and incubated at 37°C and 850 rpm for 2 h. Afterwards, the bacteria were infected with  $5 \times 10^9$  cfu Hyperphage/well and incubated at 37°C without shaking for 30 min, followed by shaking at 850 rpm for 30 min. The MTP plate was centrifuged at

3,220xg for 10 min and the supernatants were discarded. Afterwards, the bacterial pellets were resuspended in 175 µL/well 2xTY containing 100 mg/mL ampicillin and 30 µg/mL kanamycin (2xTY-AK) and incubated at 30°C at 850 rpm overnight for phage production. The bacteria were pelleted again and the supernatants were transferred to a new plate. The phage were precipitated with 1/5 volume 20% PEG/2.5 M NaCl solution at 4°C for 1 h and centrifuged at 3,220xg for 1 h. The phage pellet was dissolved in 150 µL PBS and residual bacteria were removed by another centrifugation at 3,220xg for 5 min. The phage containing supernatants were stored at 4°C or directly used for ELISA.

#### Screening of individual oligopeptide phage clones

For phage ELISA, the produced polypeptide phage particles were captured. Here, 100 µL of 250 ng/mL mouse anti-M13 (B62-FE2, Progen, Freiburg, Germany) in PBS were coated at 4°C overnight. After coating the wells were blocked with 2% MPBST. Between each incubation step the wells were washed three-times with PBST using an ELISA washer. 150 µL of the monoclonal phage production were incubated for 2 h. The pig convalescent serum was diluted 1:200 in 2% MPBST supplemented with 1/10 volume *E. coli* cell lysate and 1x10<sup>10</sup> cfu Hyperphage/mL, added to the captured phage particles and incubated for 2 h. The bound pig IgGs were detected with goat anti-swine IgG conjugated with horseradish peroxidase (HRP) (1:1000) for 1.5 h and visualised with TMB (3,3',5,5'-tetramethylbenzidine) substrate. The staining reaction was stopped by adding 100 µL 1 N sulphuric acid. The absorbances at 450 nm and scattered light at 620 nm were measured and the 620 nm value was subtracted using a SUNRISE microtiter plate reader (Tecan, Crailsheim, Germany).

#### Cloning of the fullsize gene fragments

The corresponding proteins of the identified immunogenic polypeptides were amplified by PCR using the genomic DNA and the following oligonucleotide primers: TM208-forward (5' AAGGAGATACATATGAGC CAAAAATGTCAACATGCT 3'), TM208-reverse (5' CTCGAGTGCGGCCGCTTTAAGCCAGGCTCCGGCC ATTAA 3') for putative dihydroxyaciddehydratase, TM209-forward (5' AAGGAGATACATATGGCTTC TTTAGTTATTGCTGAACAT 3'), TM209-reverse (5' CTCGAGTGCGGCCGCTAATTTATCGATAAGTTCA GGTAC 3') for putative electron transfer protein alpha, TM210-forward (5' AAGGAGATACATATGAGCTA CCCGTCGCTGTTTCGCCCG 3'), TM210-reverse (5' CTCGAGTGCGGCCGCAATCTCCAGTGCCAGTCGG GTGCC 3') for 2,4-dieonyl-CoA reductase, TM211-forward (5' AAGGAGATACATATGAATAGTCTGT TGCCGCCGGTTCG3'), TM211-reverse (5' CTCGA

GTGCGGCCGCTGGATTCACTCTCATTGTGTCAAT 3') for phage tail-like protein, TM212-forward (5' CAG CCGGCCATGGCTTCAATGAATAAAGCAGTCAGTA GTGAG 3'), TM212-reverse (5' CTCGAGTGCGGCCG CACGTGCCGGGCGGTATTCGCGCCA 3') for putative carbohydratekinase, TM213-forward (5' CAGCCGG CCATGGCTGCGGTGCAGCAGGCTATGCGCAACG AA 3'), TM213-reverse (5' TCGCGCCGCAAGCTT GATTTTTTCGATTTCCACCAGATTTGT 3') for putative dimethyl sulphoxide reductase chain A1, and TM214-forward (5' AAGGAGATACATATGATGTC AGCATGTTTTTTGGCCGA 3'), TM214-reverse (5' CTCGAGTGCGGCCGATCAATTATTTGGTGAGT GTTTG 3') for hypothetical protein STM14. The PCR was performed using the following protocol: 98°C 30 sec, 98°C 10 sec, 60°C 20 sec, 72°C 120 sec, 24 cycles. The DNA was separated by electrophoresis in a 1% agarose gel. The bands of interest were cut out from the gel, the DNA was eluted and used for cloning into pET21A + or pET21A + pelB. After ligation the plasmids were transformed into *E. coli* BLR-DE3. Positive clones were identified by using colony PCR using the oligonucleotide primers MHPET21\_f1 (5' GAGCGGATAAC AATTCCCC 3') and MHPET21\_r1 (5' GCAGCCAAC CAGCTTCC 3').

#### Production of the immunogenic proteins

Five hundred mL 2xTY-GA medium were inoculated with 5 mL overnight culture and cultivated to an O.D.<sub>600</sub> of 1.0 at 37°C and 250 rpm. The expression was induced with 1 mM IPTG (final concentration) overnight. Cells were harvested by centrifugation at 7.500 xg for 15 min. Lysis was performed with 1 mg/mL lysozyme and 5 µg/mL DNaseI in 15 mL His-tag binding buffer pH7.4 (20 mM Na<sub>2</sub>HPO<sub>4</sub>, 0.5 M NaCl, 10 mM Imidazol). For isolation of inclusion bodies 8 M Urea was added. The purification was performed under denaturing conditions with FastFlow Sepharose (GE Healthcare) loaded with nickel. The Sepharose was washed with 10 mM, 30 mM and 60 mM imidazole (20 mM Na<sub>2</sub>HPO<sub>4</sub>, 0.5 M NaCl, 10, 30 or 60 mM Imidazol). For elution, 5 mL 100 mM EDTA in PBS supplemented with 8 M urea were used.

#### SDS-PAGE

Antigens were analysed by 12% SDS-PAGE using a Protean II Minigel system (BioRad Inc, München, Germany) according to [63]. Protein gels were stained with coomassie blue.

#### Enzyme linked immunosorbent assay (ELISA) for verification of immunogenic proteins

One µg of antigen was coated to 96 well microtitre plates (MaxiSorp, Nunc) in 50 mM NaHCO<sub>3</sub> pH 9.6 overnight at 4°C. After coating, the wells were washed three times with PBST and blocked with 2% MPBST for

1.5 h at RT, followed by three washing steps with PBST. For serum ELISA, sera were diluted 1:200 in 100  $\mu$ L 2% MPBST and incubated in the antigen coated plates for 1.5 h at RT, followed by three PBST washing cycles. Bound pig IgGs were detected with goat anti-swine IgG HRP conjugate (1:10,000) (Dianova, Hamburg, Germany). The visualisation was performed with TMB (3,3',5,5'-tetramethylbenzidine) as a substrate and the staining reaction was stopped by adding 100  $\mu$ L 1 N sulphuric acid. Absorbance at 450 nm was measured by using a SUNRISE™ microtitre plate reader (Tecan, Crailsheim, Germany).

#### Generation of antibodies against the identified antigens

The selection of recombinant antibodies was performed according to [64] with modifications. In short, pannings were performed in 96 well microtitre plates (MaxiSorp, Nunc, Wiesbaden, Germany). One  $\mu$ g of antigen was coated in PBS pH 7.4 [63] overnight at 4°C. The antigen-coated wells and wells for the preincubation of the library were blocked with 2% MPBST. In each case  $2.5 \times 10^{11}$  phage particles of the human naive antibody gene libraries HAL7 and HAL8 [39] were diluted in PBST with 1% skim milk and 1% bovine serum albumin (BSA) and preincubated for 1 h. The supernatant, containing the depleted library, was incubated in the antigen-coated wells at RT for 2 h followed by 10 washing steps with PBST. Afterwards, bound scFv phage particles were eluted with 200  $\mu$ L trypsin solution (10  $\mu$ g/mL trypsin in PBS) at 37°C for 30 min. The supernatant containing eluted scFv phage particles was transferred into a new tube. Ten  $\mu$ L of eluted scFv phage were used for titration as described before [64]. Twenty mL *E. coli* XL1-Blue MRF' (Agilent, Böblingen, Germany) culture in the logarithmic growth phase (O.D.<sub>600</sub> = 0.4 - 0.5) were infected with the remaining scFv-phage at 37°C for 30 min without shaking. The infected cells were harvested by centrifugation for 10 min at 3220xg and the pellet was resuspended in 250  $\mu$ L 2xTY medium [63] supplemented with 100 mM glucose and 100  $\mu$ g/mL ampicillin (2xTY-GA), plated on a 15 cm 2xTY agar plate supplemented with 100 mM glucose and 100  $\mu$ g/mL ampicillin and incubated overnight at 37°C. Grown colonies were harvested with 5 mL 2xTY-GA. Thirty mL of 2xTY-GA were inoculated with 100  $\mu$ L of the harvested colony suspension and grown to an O.D.<sub>600</sub> of 0.4 to 0.5 at 37°C and 250 rpm. Five mL bacteria suspension ( $\sim 2.5 \times 10^9$  bacteria) were infected with  $5 \times 10^{10}$  helperphage M13K07 (Stratagene), incubated at 37°C for 30 min without shaking, followed by 30 min at 250 rpm. Infected cells were harvested by centrifugation for 10 min at 3220 xg and the pellet was resuspended in 30 mL 2xTY supplemented with 100  $\mu$ g/mL ampicillin and 50  $\mu$ g/mL kanamycin (2xTY-AK). Antibody phage

were produced at 30°C and 250 rpm for 16 h. Cells were harvested by centrifugation for 10 min at 3220xg. The supernatant containing the antibody phage ( $\sim 1 \times 10^{12}$  cfu/mL) were directly used for the next panning round or stored at 4°C for a few days.

#### Production of scFv in microtitre plates (MTPs)

The identification of monoclonal binders was performed as described before [43]. In brief, 96-well MTPs with polypropylene (PP) wells (U96 PP 0.5 mL, Greiner, Frickenhausen, Germany) containing 150  $\mu$ L phosphate buffered 2xTY-GA [63] (2xTY-GA supplemented with 10% (v/v) potassium phosphate buffer (0.17 M KH<sub>2</sub>PO<sub>4</sub>, 0.72 M K<sub>2</sub>HPO<sub>4</sub>)) were inoculated with colonies from the titration plate of the third panning round. MTPs were incubated overnight at 37°C at 1000 rpm in a MTP shaker (Thermoshaker PST-60HL-4, Lab4You, Berlin, Germany). A volume of 180  $\mu$ L phosphate-buffered 2xTY-GA in PP-MTP well was inoculated with 10  $\mu$ L of the overnight culture and grown at 37°C and 800 rpm for 2 h. Bacteria were harvested by centrifugation for 10 min at 3220xg and 180  $\mu$ L supernatant were removed. The pellets were resuspended in 180  $\mu$ L buffered 2xTY supplemented with 100  $\mu$ g/mL ampicillin, 100 mM sucrose and 50  $\mu$ M isopropyl-beta D thiogalactopyranoside (IPTG) and incubated at 30°C and 800 rpm overnight. Bacteria were pelleted by centrifugation for 10 min at 3,220 xg and 4°C. The scFv-containing supernatant was transferred to a new PP-MTP and stored at 4°C before analysis.

#### Identification of monoclonal scFv using ELISA

Antigen coating was performed as described above (Enzyme linked immunosorbent assay (ELISA) for verification of immunogenic proteins). For identification of binders, supernatants containing monoclonal scFv were incubated in the antigen coated plates for 1.5 h at RT followed by three PBST washing cycles. Bound scFv were detected using murine mAb 9E10 which recognises the C-terminal c-myc tag and a goat anti-mouse serum conjugated with horseradish peroxidase (HRP) (Sigma; 1:10,000).

The detection was performed as described above.

#### Production of scFv in the LEX system

The large-scale expression system (LEX) (Harbinger Biotech, Toronto, Canada) was used for production of scFv. *E. coli* (XL1-Blue-MRF') was cultivated in 2 L glass bottles up to a cultivation volume of 1.5 L. To obtain sufficient oxygenation and mixing of the culture, the bottles were connected to an air manifold, which allows a general air flow rate of 4–6 L/min. A thermostat-controlled water bath was used for regulating the temperature of the cultivation. 50 ml TB supplemented with 100  $\mu$ g/mL



ampicillin were inoculated with a glycerol stock of each scFv clone and the culture was grown over night at 37°C. Glass bottles with 1.5 L TB supplemented with 100 µg/mL ampicillin and 500 µL antifoam 204 (Sigma, München, Germany) were inoculated with the overnight culture. The O.D.<sub>600</sub> was adjusted to 0.1 and incubated at 37°C until an O.D.<sub>600</sub> of 1.5 to 5 was reached. The temperature of the water bath was then reduced to 25°C. After 1 h, scFv expression was induced by addition of 50 µM IPTG. The cultivation was continued for 3 h resulting in a final O.D.<sub>600</sub> of 2 to 7 depending on the antibody clone. *E. coli* cells were harvested by centrifugation at 4,400xg (Sorvall Zentrifuge RC6 Plus, Rotor F9S-4x1000Y) for 10 min at 4°C. The pellet was resuspended in 60 mL ice-cold PE-buffer pH 8 (20% (w/v) sucrose, 50 mM Tris, 1 mM EDTA) and was incubated on ice for 20 min while shaking. Afterwards the sample was centrifuged at 20,000xg and 4°C for 30 min (Sorvall Zentrifuge RC6 Plus, Rotor F12-6x500y). The supernatant (periplasmic preparation) was filled into a fresh glass bottle and kept on ice. The pellet was re-suspended in 60 mL ice-cold OS-buffer (5 mM MgSO<sub>4</sub> in dH<sub>2</sub>O) and was incubated on ice while shaking. After 20 min the preparation was centrifuged at 20,000xg and 4°C for 30 min (Sorvall Zentrifuge RC6 Plus, Rotor F12-6x500y). The supernatant (osmotic shock fraction) was combined with the periplasmic preparation and was used for protein purification.

#### IMAC purification of scFv

Antibody fragments were purified by affinity chromatography using IMAC. Chromatography using Profinia (BioRad) and 1 mL FF-crude column (GE Healthcare, München, Germany) was performed according to the manufacturer's instruction. The protein solution was adjusted to 10 mM imidazol containing buffer (20 mM Na<sub>2</sub>HPO<sub>4</sub>, 500 mM NaCl, 10 mM imidazol) for loading. The column was washed one time with 10 mM imidazol buffer (20 mM Na<sub>2</sub>HPO<sub>4</sub>, 500 mM NaCl, 10 mM imidazol). Five hundred mM imidazol was used for elution, followed by desalting and storage in PBS.

#### Titration ELISA using scFv

For the scFv titration ELISA the antigen was coated as described above (Enzyme linked immunosorbent assay (ELISA) for verification of immunogenic proteins). The ELISA was performed as described above (Identification of monoclonal scFv using ELISA) with one modification: a dilution series of IMAC purified scFv was used instead of the scFv supernatant. The EC<sub>50</sub> values (antibody concentration at the half maximal binding) are deduced from this titration ELISA.

#### Detection of the immunogenic proteins by immunostain using scFv

Purified immunogenic proteins were separated by 12% SDS-PAGE. Western Blotting on PVDF (Polyvinylidene-fluorid) membranes of gels was performed using the Mini Trans-Blot<sup>®</sup> system (BioRad). The membrane was blocked with 2% (w/v) skimmed milk powder in PBST over night.

The antigens were detected with 20 µg/mL scFv for 1 h at RT. The scFv myc-tag was detected with mouse anti myc-tag (9E10, Sigma, Taufkirchen, Germany) for 1 h, followed by goat anti-mouse (Fc specific) (Sigma) conjugated with alkaline phosphatase (1:20,000) for 1 h. The visualisation was performed by addition of BCIP (5-bromo-4-chloro-3-indolyl phosphate) and NBT (nitro-blue tetrazolium).

#### Conclusion

A "pipeline" from antigen identification to the generation of recombinant antibodies using phage display was shown. Here, novel immunogenic proteins of *Salmonella* Typhimurium were identified using phage display and validated using a panel of positive and negative sera. Afterwards, recombinant human antibody fragments were generated against these marker proteins.

#### Competing interests

The authors declare that they have no competing interests.

#### Acknowledgements

This project was supported by the BMBF (BioRegion) and EFRE. Our special thanks go to Ronny Fischer from our EC office who helped with bureaucracy of EFRE/NBANK. We also thank to David Havlik, Jonas Zantow, Alex Pytko and David Becker for careful corrections on the manuscript.

#### Author details

<sup>1</sup>Technische Universität Braunschweig, Institut für Biochemie, Biotechnologie und Bioinformatik, Abteilung Biotechnologie, Spielmannstr.7, 38106 Braunschweig, Germany. <sup>2</sup>IVD GmbH Heisterbergallee 12, 30453 Hannover, Germany. <sup>3</sup>Present address: vaxxinoa GmbH diagnostics, Johann-Krane-Weg 42, 48149 Münster, Germany.

#### Authors' contributions

TM and SM performed most of the experiments and helped to draft the manuscript. TS and AF performed some of the experiments and participated in the design and coordination of the study. JSS, SD, GFG and KSM participated in the design and coordination of the study and helped to write the paper. MH and JSS wrote the grant application. MH participated in the design and coordination of the study wrote the publication. All authors read and approved the final manuscript.

Received: 23 January 2012 Accepted: 25 May 2012

Published: 15 June 2012

#### References

1. Fookes M, Schroeder GN, Langridge GC, Blondel CJ, Mammina C, Connor TR, Seth-Smith H, Vernikos GS, Robinson KS, Sanders M, Petty NK, Kingsley RA, Bäumlér AJ, Nuccio S-P, Contreras I, Santiviago CA, Maskell D, Barrow P, Humphrey T, Nastasi A, Roberts M, Frankel G, Parkhill J, Dougan G, Thomson NR: *Salmonella bongori* provides insights into the evolution of the *Salmonellae*. *PLoS Pathog* 2011, **7**:e1002191.
2. Guibourdenche M, Roggentin P, Mikoleit M, Fields PI, Bockemühl J, Grimont PAD, Weill F-X: Supplement 2003–2007 (No. 47) to the White-Kauffmann-Le Minor scheme. *Res Microbiol* 2010, **161**:26–29.



3. van der Wolf PJ, Peperkamp NH: **Salmonella (sero)types and their resistance patterns in pig faecal and post-mortem samples.** *Vet Q* 2001, **23**:175–181.
4. Jacobsen A, Hendriksen RS, Aarestrup FM, Ussery DW, Friis C: **The Salmonella enterica pangenome.** *Microb Ecol* 2011, **62**:487–504.
5. European Food Safety Authority, European Centre for Disease Prevention and Control: **The European Union Summary Report on Trends and Sources of Zoonoses, Zoonotic Agents and Food-borne Outbreaks in 2009.** *EFSA Journal* 2011, **9**:1–378.
6. Little CL, Richardson JF, Owen RJ, de Pinna E, Threlfall EJ: **Campylobacter and Salmonella in raw red meats in the United Kingdom: prevalence, characterization and antimicrobial resistance pattern, 2003–2005.** *Food Microbiol* 2008, **25**:538–543.
7. Menz G, Aldred P, Vriesekoop F: **Growth and survival of foodborne pathogens in beer.** *J Food Prot* 2011, **74**:1670–1675.
8. Bugarel M, Granier SA, Weill F-X, Fach P, Brisabois A: **A multiplex real-time PCR assay targeting virulence and resistance genes in Salmonella enterica serotype Typhimurium.** *BMC Microbiol* 2011, **11**:151.
9. Roesler U, Szabo I, Matthies C, Albrecht K, Leffler M, Scherer K, Nöckler K, Lehmann J, Methner U, Hensel A, Truyen U: **Comparing validation of four ELISA-systems for detection of Salmonella derby- and Salmonella infantis-infected pigs.** *Berl Munch Tierarztl Wochenschr* 2011, **124**:265–271.
10. Farmer JJ III: **Enterobacteriaceae: introduction and identification.** In *Manual of Clinical Microbiology*: ASM Press; 1999:442–458.
11. Gaillot O, di Camillo P, Berche P, Courcol R, Savage C: **Comparison of CHROMagar Salmonella medium and hektoen enteric agar for isolation of salmonellae from stool samples.** *J Clin Microbiol* 1999, **37**:762–765.
12. Silverman AP, Kool ET: **Quenched autologation probes allow discrimination of live bacterial species by single nucleotide differences in rRNA.** *Nucleic Acids Res* 2005, **33**:4978–4986.
13. Alvarez J, Sota M, Vivanco AB, Perales I, Cisterna R, Rementeria A, Garaizar J: **Development of a multiplex PCR technique for detection and epidemiological typing of salmonella in human clinical samples.** *J Clin Microbiol* 2004, **42**:1734–1738.
14. Wang H, Li Y, Wang A, Slavik M: **Rapid, sensitive, and simultaneous detection of three foodborne pathogens using magnetic nanobead-based immunoseparation and quantum dotbased multiplex immunoassay.** *J Food Prot* 2011, **74**:2039–2047.
15. Nielsen B, Baggesen D, Bager F, Haugegaard J, Lind P: **The serological response to Salmonella serovars typhimurium and infantis in experimentally infected pigs. The time course followed with an indirect anti-LPS ELISA and bacteriological examinations.** *Vet Microbiol* 1995, **47**:205–218.
16. Steinbach G, Staak C: **Assessment of the Salmonella burden in slaughter pigs through the results of meat-juice-ELISA.** *Berl Munch Tierarztl Wochenschr* 2001, **114**:174–178.
17. van der Heijden HM: **First international ring trial of ELISAs for Salmonella antibody detection in swine.** *Berl Munch Tierarztl Wochenschr* 2001, **114**:389–392.
18. Kuhn KG, Falkenhorst G, Ceper TH, Dalby T, Ethelberg S, Mølbak K, Kroghfelt KA: **Detecting non-typhoid Salmonella in humans by ELISAs: a literature review.** *J Med Microbiol* 2012, **61**:1–7.
19. Delvecchio VG, Connolly JP, Alefantis TG, Walz A, Quan MA, Patra G, Ashton JM, Whittington JT, Chafin RD, Liang X, Grewal P, Khan AS, Mujer CV: **Proteomic profiling and identification of immunodominant spore antigens of Bacillus anthracis, Bacillus cereus, and Bacillus thuringiensis.** *Appl Environ Microbiol* 2006, **72**:6355–63.
20. Huntley JF, Conley PG, Hagman KE, Norgard MV: **Characterization of Francisella tularensis outer membrane proteins.** *J Bacteriol* 2007, **189**:561–74.
21. Jacobsen ID, Meens J, Baltes N, Gerlach G-F: **Differential expression of non-cytoplasmic Actinobacillus pleuropneumoniae proteins induced by addition of bronchoalveolar lavage fluid.** *Vet Microbiol* 2005, **109**:245–56.
22. LaFrentz BR, LaPatra SE, Call DR, Wiens GD, Cain KD: **Identification of immunogenic proteins within distinct molecular mass fractions of Flavobacterium psychrophilum.** *J Fish Dis* 2011, **34**:823–830.
23. Meens J, Selke M, Gerlach G-F: **Identification and immunological characterization of conserved Mycoplasma hypopneumoniae lipoproteins Mhp378 and Mhp651.** *Vet Microbiol* 2006, **116**:85–95.
24. Zhao Z, Yan F, Ji W, Luo D, Liu X, Xing L, Duan Y, Yang P, Shi X, Lu Z, Wang X: **Identification of immunoreactive proteins of Brucella melitensis by immunoproteomics.** *Sci China Life Sci* 2011, **54**:880–887.
25. Smith GP: **Filamentous fusion phage: novel expression vectors that display cloned antigens on the virion surface.** *Science* 1985, **228**:1315–7.
26. Dübel S, Stoevesandt O, Taussig MJ, Hust M: **Generating recombinant antibodies to the complete human proteome.** *Trends Biotechnol* 2010, **28**:333–339.
27. Hoogenboom HR: **Selecting and screening recombinant antibody libraries.** *Nat Biotechnol* 2005, **23**:1105–16.
28. Thie H, Meyer T, Schirrmann T, Hust M, Dübel S: **Phage display derived therapeutic antibodies.** *Curr Pharm Biotechnol* 2008, **9**:439–446.
29. Winter G, Griffiths AD, Hawkins RE, Hoogenboom HR: **Making antibodies by phage display technology.** *Annu Rev Immunol* 1994, **12**:433–55.
30. Cramer R, Kodzius R, Konthur Z, Lehrach H, Blaser K, Walter G: **Tapping allergen repertoires by advanced cloning technologies.** *Int Arch Allergy Immunol* 2001, **124**:43–7.
31. Govarts C, Somers K, Hupperts R, Stinissen P, Somers V: **Exploring cDNA phage display for autoantibody profiling in the serum of multiple sclerosis patients: optimization of the selection procedure.** *Ann N Y Acad Sci* 2007, **1109**:372–84.
32. Naseem S, Meens J, Jores J, Heller M, Dübel S, Hust M, Gerlach G-F: **Phage display-based identification and potential diagnostic application of novel antigens from Mycoplasma mycoides subsp. mycoides small colony type.** *Vet Microbiol* 2010, **142**:285–292.
33. Rhyner C, Weichel M, Flückiger S, Hemmann S, Kleber-Janke T, Cramer R: **Cloning allergens via phage display.** *Methods* 2004, **32**:212–8.
34. Rosander A, Guss B, Frykberg L, Björkman C, Näslund K, Pringle M: **Identification of immunogenic proteins in Treponema phagedenis-like strain V1 from digital dermatitis lesions by phage display.** *Vet Microbiol* 2011, **153**:315–322.
35. Jacobsson K, Frykberg L: **Shotgun phage display cloning.** *Comb Chem High Throughput Screen* 2001, **4**:135–143.
36. Jacobsson K, Rosander A, Bjerketorp J, Frykberg L: **Shotgun Phage Display - Selection for Bacterial Receptors or other Exported Proteins.** *Biol Proced Online* 2003, **5**:123–135.
37. Hust M, Meising M, Schirrmann T, Selke M, Meens J, Gerlach G-F, Dübel S: **Enrichment of open reading frames presented on bacteriophage M13 using hyperphage.** *Biotechniques* 2006, **41**:335–42.
38. Kügler J, Nieswandt S, Gerlach GF, Meens J, Schirrmann T, Hust M: **Identification of immunogenic polypeptides from a Mycoplasma hypopneumoniae genome library by phage display.** *Appl Microbiol Biotechnol* 2008, **80**:447–58.
39. Hust M, Meyer T, Voedisch B, Rülker T, Thie H, El-Ghezal A, Kirsch MI, Schütte M, Helmsing S, Meier D, Schirrmann T, Dübel S: **A human scFv antibody generation pipeline for proteome research.** *J Biotechnol* 2011, **152**:159–170.
40. Rondot S, Koch J, Breiting F, Dübel S: **A helper phage to improve single-chain antibody presentation in phage display.** *Nat Biotechnol* 2001, **19**:75–8.
41. Soltes G, Hust M, Ng KKY, Bansal A, Field J, Stewart DIH, Dübel S, Cha S, Wiersma EJ: **On the influence of vector design on antibody phage display.** *J Biotechnol* 2007, **127**:626–37.
42. Mollova S, Retter I, Hust M, Dübel S, Müller W: **Analysis of single chain antibody sequences using the vBASE2 Fab analysis tool.** In *Antibody Engineering*. 2nd edition. Heidelberg/New York: Springer Verlag; 2010:3–10.
43. Hust M, Steinwand M, Al-Halabi L, Helmsing S, Schirrmann T, Dübel S: **Improved microtitre plate production of single chain Fv fragments in Escherichia coli.** *N Biotechnol* 2009, **25**:424–428.
44. McCafferty J, Griffiths AD, Winter G, Chiswell DJ: **Phage antibodies: filamentous phage displaying antibody variable domains.** *Nature* 1990, **348**:552–4.
45. Pershad K, Pavlovic JD, Gräslund S, Nilsson P, Colwill K, Karatt-Vellatt A, Schofield DJ, Dyson MR, Pawson T, Kay BK, McCafferty J: **Generating a panel of highly specific antibodies to 20 human SH2 domains by phage display.** *Protein Eng Des Sel* 2010, **23**:279–288.
46. Colwill K, Persson H, Jarvik NE, Wyrzucki A, Wojcik J, Koide A, Kossiakoff AA, Koide S, Sidhu S, Dyson MR, Pershad K, Pavlovic JD, Karatt-Vellatt A, Schofield DJ, Kay BK, McCafferty J, Mersmann M, Meier D, Mersmann J, Helmsing S, Hust M, Dübel S, Berkowicz S, Freemantle A, Spiegel M, Sawyer A, Layton D, Nice E, Dai A, Rocks O, Williton K, Fellouse FA, Hersi K, Pawson T, Nilsson P, Sundberg M, Sjöberg R, Sivertsson A, Schwenk JM, Takanen JO, Hober S, Uhlén M, Dahlgren L-G, Flores A, Johansson I, Weigelt J, Crombet L, Loppnau P, Koziaradzki I, Cossar D, Arrowsmith CH, Edwards AM, Gräslund

- S: A roadmap to generate renewable protein binders to the human proteome. *Nat Methods* 2011, **8**:551–558.
47. Breitling F, Dübel S, Seehaus T, Klewinghaus I, Little M: **A surface expression vector for antibody screening.** *Gene* 1991, **104**:147–53.
  48. Miltiadou DR, Mather A, Vilei EM, Du Plessis DH: **Identification of genes coding for B cell antigens of *Mycoplasma mycoides* subsp. *mycoides* Small Colony (MmmSC) by using phage display.** *BMC Microbiol* 2009, **9**:215.
  49. Kodzius R, Rhyner C, Konthur Z, Buczek D, Lehrach H, Walter G, Cramer R: **Rapid identification of allergen-encoding cDNA clones by phage display and high-density arrays.** *Comb Chem High Throughput Screen* 2003, **6**:147–54.
  50. González E, Robles Y, Govezensky T, Bobes RJ, Gevorkian G, Manoutcharian K: **Isolation of neurocysticercosis-related antigens from a genomic phage display library of *Taenia solium*.** *J Biomol Screen* 2010, **15**:1268–1273.
  51. Cárcamo J, Ravera MW, Brissette R, Dedova O, Beasley JR, Alam-Moghé A, Wan C, Blume A, Mandecki W: **Unexpected frameshifts from gene to expressed protein in a phage-displayed peptide library.** *Proc Natl Acad Sci USA* 1998, **95**:11146–11151.
  52. Goldman E, Korus M, Mandecki W: **Efficiencies of translation in three reading frames of unusual non-ORF sequences isolated from phage display.** *FASEB J* 2000, **14**:603–611.
  53. Selke M, Meens J, Springer S, Frank R, Gerlach G-F: **Immunization of pigs to prevent disease in humans: construction and protective efficacy of a *Salmonella enterica* serovar Typhimurium live negative-marker vaccine.** *Infect Immun* 2007, **75**:2476–2483.
  54. Michels J, Geyer A, Mocanu V, Welte W, Burlingame AL, Przybylski M: **Structure and functional characterization of the periplasmic N-terminal polypeptide domain of the sugarspecific ion channel protein (ScrY porin).** *Protein Sci* 2002, **11**:1565–1574.
  55. Zhou D, Hardt WD, Galán JE: ***Salmonella typhimurium* encodes a putative iron transport system within the centisome 63 pathogenicity island.** *Infect Immun* 1999, **67**:1974–1981.
  56. Rong G, Zhong R, Lleo A, Leung PSC, Bowlus CL, Yang G-X, Yang C-Y, Coppel RL, Ansari AA, Cuebas DA, Worman HJ, Invernizzi P, Gores GJ, Norman G, He X-S, Gershwin ME: **Epithelial cell specificity and apoptotic recognition by serum autoantibodies in primary biliary cirrhosis.** *Hepatology* 2011, **54**:196–203.
  57. Scholl D, Cooley M, Williams SR, Gebhart D, Martin D, Bates A, Mandrell R: **An engineered R-type pyocin is a highly specific and sensitive bactericidal agent for the food-borne pathogen *Escherichia coli* O157:H7.** *Antimicrob Agents Chemother* 2009, **53**:3074–3080.
  58. Meyer T, Stratmann-Selke J, Meens J, Schirrmann T, Gerlach GF, Frank R, Dübel S, StrutzbergMinder K, Hust M: **Isolation of scFv fragments specific to OmpD of *Salmonella Typhimurium*.** *Vet Microbiol* 2011, **147**:162–169.
  59. Dalby T, Strid MA, Beyer NH, Blom J, Mølbak K, Kroghfelt KA: **Rapid decay of *Salmonella* flagella antibodies during human gastroenteritis: a follow up study.** *J Microbiol Methods* 2005, **62**:233–243.
  60. Schofield DJ, Pope AR, Clementel V, Buckell J, Chapple SD, Clarke KF, Conquer JS, Crofts AM, Crowther SRE, Dyson MR, Flack G, Griffin GJ, Hooks Y, Howat WJ, Kolb-Kokocinski A, Kunze S, Martin CD, Maslen GL, Mitchell JN, O'Sullivan M, Perera RL, Roake W, Shadbolt SP, Vincent KJ, Warford A, Wilson WE, Xie J, Young JL, McCafferty J: **Application of phage display to high throughput antibody generation and characterization.** *Genome Biol* 2007, **8**:R254.
  61. Frenzel A, Fröde D, Meyer T, Schirrmann T, Hust M: **Generating Recombinant Antibodies for Research, Diagnostics and Therapy Using Phage Display.** *Curr Biotech* 2012, **1**:33–41.
  62. Pereira B, Benedict CR, Le A, Shapiro SS, Thiagarajan P: **Cardiolipin binding a light chain from lupus-prone mice.** *Biochemistry* 1998, **37**:1430–1437.
  63. Sambrook J, Russell D: *Molecular cloning: a laboratory manual*. 3rd edition. New York: Cold Spring Harbor Laboratory Press; 2001.
  64. Schirrmann T, Hust M: **Construction of human antibody gene libraries and selection of antibodies by phage display.** *Methods Mol Biol* 2010, **651**:177–209.

doi:10.1186/1472-6750-12-29

**Cite this article as:** Meyer et al.: Identification of immunogenic proteins and generation of antibodies against *Salmonella Typhimurium* using phage display. *BMC Biotechnology* 2012 **12**:29.

**Submit your next manuscript to BioMed Central and take full advantage of:**

- Convenient online submission
- Thorough peer review
- No space constraints or color figure charges
- Immediate publication on acceptance
- Inclusion in PubMed, CAS, Scopus and Google Scholar
- Research which is freely available for redistribution

Submit your manuscript at  
www.biomedcentral.com/submit

