

Research article

Open Access

Retrofitting BACs with G418 resistance, luciferase, and *oriP* and *EBNA-1* – new vectors for *in vitro* and *in vivo* delivery

Christine Magin-Lachmann², George Kotzamanis¹, Leonardo D'Aiuto³, Ernst Wagner⁴ and Clare Huxley*¹

Address: ¹MAC group, Clinical Sciences Centre, Imperial College Faculty of Medicine, Hammersmith Campus, Du Cane Road, London W12 0NN, UK, ²Boehringer Ingelheim Austria GmbH, A-1121 Vienna, Austria, current address: BAXTER BioScience, A-1220 Vienna, Austria, ³MRC Human Genetics Unit, Western General Hospital, Crewe Road, Edinburgh EH4 2XU, UK and ⁴Pharmaceutical Biology-Biotechnology, Ludwig-Maximilians-Universität München, Butenandstrasse 5-13, D-81377 Munich, Germany

Email: Christine Magin-Lachmann - christine_magin_lachmann@baxter.com; George Kotzamanis - george.kotzamanis@ic.ac.uk; Leonardo D'Aiuto - leonardo@hgu.mrc.ac.uk; Ernst Wagner - ernst.wagner@cup.uni-muenchen.de; Clare Huxley* - c.huxley@ic.ac.uk

* Corresponding author

Published: 3 February 2003

Received: 4 December 2002

BMC Biotechnology 2003, 3:2

Accepted: 3 February 2003

This article is available from: <http://www.biomedcentral.com/1472-6750/3/2>

© 2003 Magin-Lachmann et al; licensee BioMed Central Ltd. This is an Open Access article: verbatim copying and redistribution of this article are permitted in all media for any purpose, provided this notice is preserved along with the article's original URL.

Abstract

Background: Bacterial artificial chromosomes (BACs) have been used extensively for sequencing the human and mouse genomes and are thus readily available for most genes. The large size of BACs means that they can generally carry intact genes with all the long range controlling elements that drive full levels of tissue-specific expression. For gene expression studies and gene therapy applications it is useful to be able to retrofit the BACs with selectable genes such as G418 resistance, reporter genes such as luciferase, and *oriP/EBNA-1* from Epstein Barr virus which allows long term episomal maintenance in mammalian cells.

Results: We describe a series of retrofitting plasmids and a protocol for *in vivo loxP/Cre* recombination. The vector pRetroNeo carries a G418 resistance cassette, pRetroNeoLuc carries G418 resistance and a luciferase expression cassette, pRetroNeoLucOE carries G418 resistance, luciferase and an *oriP/EBNA-1* cassette and pRetroNeoOE carries G418 resistance and *oriP/EBNA-1*. These vectors can be efficiently retrofitted onto BACs without rearrangement of the BAC clone. The luciferase cassette is expressed efficiently from the retrofitting plasmids and from retrofitted BACs after transient transfection of BI6F10 cells in tissue culture and after electroporation into muscles of BALB/c mice *in vivo*. We also show that a BAC carrying GFP, *oriP* and *EBNA-1* can be transfected into BI6F10 cells with Lipofectamine 2000 and can be rescued intact after 5 weeks.

Conclusion: The pRetro vectors allow efficient retrofitting of BACs with G418 resistance, luciferase and/or *oriP/EBNA-1* using *in vivo* expression of Cre. The luciferase reporter gene is expressed after transient transfection of retrofitted BACs into cells in tissue culture and after electroporation into mouse muscle *in vivo*. *OriP/EBNA-1* allows stable maintenance of a 150-kb BAC without rearrangement for at least 5 weeks.

Background

BACs and PACs have proven very useful vectors for cloning fragments of mammalian DNA up to about 300 kb in size. They have been used extensively for the sequencing

of the mouse and human genomes and the clones from these sequencing projects are available making almost the entire genomes available in ready sequenced clones.

For gene delivery and expression in tissue culture, or for gene therapy, the large inserts of the BACs are very useful as they generally contain all the long range controlling elements needed for full levels and tissue specific expression of genes. In addition the inserts of the BACs can be subtly modified to include reporter genes or point mutations using homologous recombination in *E. coli* mediated by RecA [1–3], the RecET system [4–7] or the Red system (Red α /Red β or *exo/bet*) [8,9].

For tissue culture and gene therapy applications it is often useful to have mammalian selectable markers, reporter genes and other elements on the vector region of the BACs. It is possible to subclone the entire insert of the BAC into a modified BAC vector [10,11] however, this involves cloning >100-kb fragments which is technically tricky. One can use homologous recombination mediated by RecA, RecET, or Red as described in the papers listed above. Alternatively one can use recombination of *loxP* sites mediated by Cre protein. We have chosen to use *loxP*/Cre recombination as all BACs and PACs carry convenient *loxP* sites and Cre only recombines *loxP* sites which should reduce unwanted rearrangements in the BAC insert. However, prior to insertion of DNA onto a BAC at a *loxP* site, it is necessary to remove or inactivate any high-copy origins from the retrofitting DNA as such an origin would make the BAC multicopy. Various methods for retrofitting new DNA at the *loxP* site using Cre recombinase have been developed. Kim et al, 1998, described a method in which the retrofitting plasmid is cut to remove the high-copy origin of replication and religated into a circle prior to *in vitro* recombination with purified BAC DNA using Cre protein followed by transfection into *E. coli* [12,13]. An improvement is to use a retrofitting plasmid which has the gamma origin of replication from the R6K plasmid which only operates in an *E. coli* host which expresses the π protein (product of the *pir* gene) so that once the plasmid is retrofitting onto the BAC the origin is not functional in the DH10B *E. coli* host [14]. The *in vitro* recombination with Cre tends to be rather inefficient and this can be overcome by expressing the Cre protein in the *E. coli* carrying the BAC so that recombination occurs *in vivo*. In one system, the Cre protein is expressed from the retrofitting plasmid itself *in vivo*. The Cre-expressing gene is however interrupted by the *loxP* site so that once recombination has occurred, no further Cre is expressed [15]. Alternatively the Cre can be expressed from a separate plasmid that is co-transfected with the retrofitting plasmid, and then lost once retrofitting has occurred. This has been used to introduce an origin-less circle of DNA onto a BAC [16] or plasmids with the gamma origin onto BACs [17].

Epstein Barr virus is maintained as a ~172 kb episome in a small proportion of B cells in most of the human population. The only viral elements needed for the episomal

maintenance of plasmids in human cells is the latent origin of plasmid replication, *oriP*, and the viral protein EBNA-1. Plasmids carrying an *oriP/EBNA-1* cassette can be maintained in human cells under selection for long periods of time. They are present at about 1–100 copies per cell and segregate by non-covalent attachment to the host chromosomes. When selection is dropped the episomes are lost at about 1–5% per cell division. There is much interest in using *oriP/EBNA-1*-containing vectors for gene therapy [18]. The presence of *oriP/EBNA-1* on gene expression vectors with reporter genes or mini-genes has been found to confer higher levels of expression and more persistent expression both *in vitro* and *in vivo* [19–22]. An *oriP/EBNA-1* cassette is able to stabilize episomes up to 660 kb in size when these are shuttled from yeast by fusion with yeast spheroplasts [23,24]. Finally it has been shown that therapeutically important genes can be expressed from the intact loci carried on large *oriP/EBNA-1*-containing vectors, including β -globin [25], *CFTR* [24], *HPRT* [17,26] and α 1-antitrypsin [27].

Here we describe four new retrofitting vectors which allow addition of G418 resistance, luciferase expression and/or *oriP/EBNA-1* to BACs, and a simple protocol based on those of Mejia and Larin, 2000 and Wade-Martins *et al.*, 2001 for *in vivo* recombination with Cre. The luciferase gene on retrofitted BACs is expressed after transient transfection of cells in tissue culture and after electroporation of mouse muscle *in vivo*. A BAC carrying *oriP/EBNA-1* was used to make stable cell lines which contained unrearranged BAC DNA after 5 weeks.

Results

New vectors

A series of new vectors for retrofitting BACs was constructed (Fig. 1a). The vectors carry bacterial elements including the gamma origin of replication which only functions in bacteria expressing the π protein, a *loxP* site, and a spectinomycin resistance gene (*Sp^R*). In addition, they carry various mammalian elements. pRetroNeo carries a G418 resistance cassette (*Neo^R*). pRetroNeoLuc carries G418 resistance and a luciferase expression cassette (*Luc*). pRetroNeoLucOE carries G418 resistance, luciferase and an *oriP/EBNA-1* cassette (OE). pRetroNeoOE carries G418 resistance and *oriP/EBNA-1*.

In vivo retrofitting

In order to retrofit the various pRetro plasmids onto a BAC, the plasmid is co-transfected into the BAC-containing bacteria along with a Cre-expression plasmid pJM2545 [16]. pJM2545 contains a *lacZ-cre* fusion gene so that the Cre protein is expressed after IPTG induction. It also has a temperature sensitive origin that is functional at 30°C. As presented in Figure 2a, *in vivo* retrofitting of a BAC with the pRetro vectors occurs at 30°C and then the

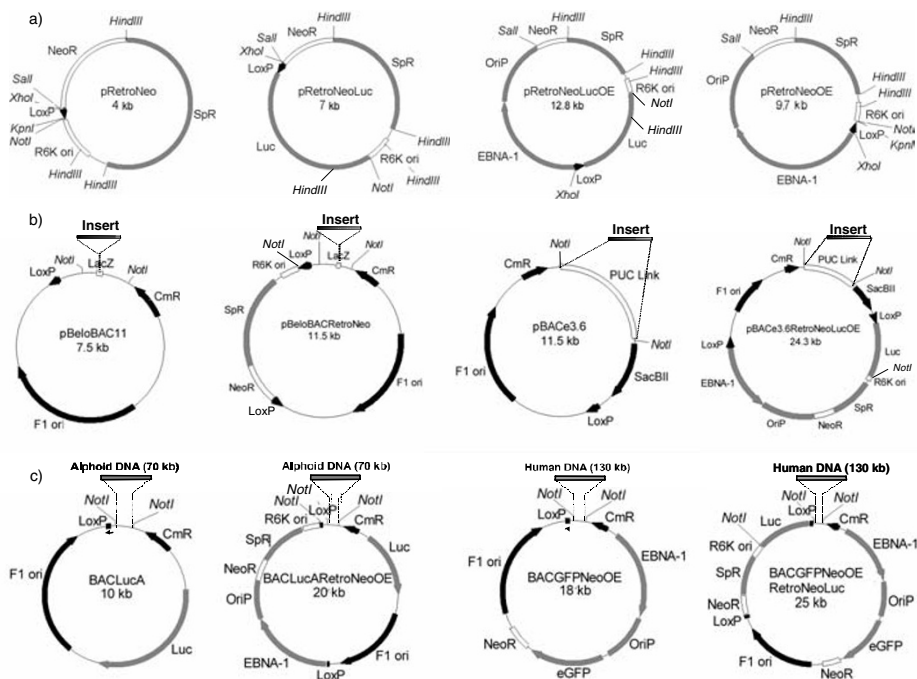


Figure 1

Maps of the retrofitting vectors, BACs and the retrofitted BACs a) pRetro vectors; pRetroNeo, pRetroNeoLuc, pRetroNeoLucOE and pRetroNeoOE. Selected restriction sites are indicated. b) Retrofitting of standard BACs; pBeloBAC11, pBeloBAC11 retrofitted with pRetroNeo (pBeloBACRetroNeo), pBACE3.6, and pBACE3.6 retrofitted with pRetroNeoLucOE (pBACE3.6RetroNeoLucOE). *NotI* sites are indicated. c) Retrofitting of specific BACs; BACLucA, BACLucARetroNeoOE, BACGFPNeoOE, and BACGFPNeoOERetroNeoLuc. *NotI* sites are indicated. The following elements are labelled; spectinomycin resistance gene (SpR), gamma origin from the R6K plasmid (R6K ori), *loxP* site (LoxP), G418 resistance cassette (NeoR), luciferase expression cassette (Luc), *oriP* from Epstein Barr virus (OriP), *EBNA-1* gene from Epstein Barr virus (EBNA-1), chloramphenicol resistance gene (CmR), F1 origin from the F factor (F1 ori), *SacBII* gene (SacBII), *lacZ* gene (LacZ) and EGFP expression cassette (eGFP).

bacteria are grown at 42°C so that pJM2545 is lost. Growth on plates containing both chloramphenicol and spectinomycin allows selection for the retrofitted BACs. Figure 1b gives maps of the standard BAC vectors pBeloBAC11 [28] and pBACE3.6 [29,30] before and after retrofitting with pRetroNeo and pRetroNeoLucOE respectively.

Three BACs were retrofitted in this work. BACLucA carries 70 kb of alphoid DNA and already carries a luciferase gene on the BAC vector. This BAC was retrofitted with pRetro-

NeoOE to introduce both a G418-resistance gene and *oriP*/EBNA-1. *NotI* was used to determine whether retrofitting had occurred correctly. The unmodified BACLucA has a ~10-kb vector fragment while BACLucARetroNeoOE has a ~20-kb fragment (Fig. 1c and 2b). With a control plasmid the transfection efficiency was about 2000 colonies (2×10^4 per μg) and about 30 colonies were obtained on the retrofitting plates. 15/15 bacterial clones that were analysed showed the correct pattern of retrofitting. The insert of the BAC with 70 kb of alphoid DNA was unrearranged in all 15 BAC colonies analysed. In two of the 15 colonies,

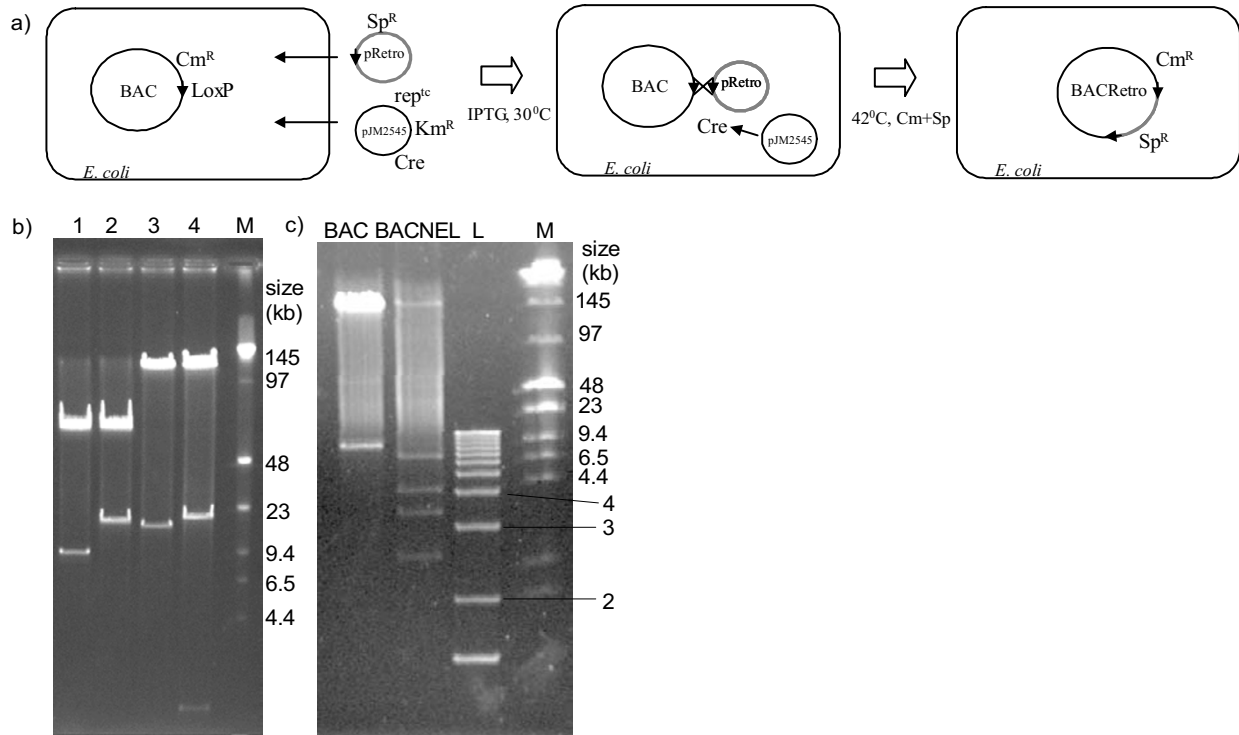


Figure 2

In vivo retrofitting of BACs a) The pRetro plasmids are cotransfected with a Cre-expression plasmid, pJM2545, into the BAC-containing *E. coli*. pJM2545 carries a temperature sensitive origin of replication (rep^{ts}) kanamycin resistance (Km^R) and an inducible *cre* gene (Cre). Recombination between the *loxP* sites (LoxP) results in the retrofitted BACs which carry both chloramphenicol and spectinomycin resistance (Cm^R and Sp^R). b) Pulsed-field gel showing retrofitted BACs. BAC DNA was digested with *NotI* and separated on a pulsed-field gel. Lane 1) BACLucA, 2) BACLucARetroNeoOE, 3) BACGFPNeoOE and 4) BACGFPNeoOERetroNeoLuc. M indicates the Low Range PFG Marker from Biolabs. Sizes of the markers are indicated on the right. c) Pulsed-field gel showing BAC 4B19 retrofitted with pNEL γ . DNA from BAC 4B19 (BAC) and the BAC retrofitted with pNEL γ (BACNEL) was digested with *NotI* and separated on a pulsed-field gel. L indicates the 1 Kb DNA Ladder from GibcoBRL and M indicates the Low Range PFG Marker from Biolabs. The sizes of the markers are indicated on the right.

the bacteria contained both retrofitted and unretrofitted BAC DNA (data not shown).

The second BAC, BACGFPNeoOE, carries a 130-kb random human DNA insert and has a GFP expression cassette, G418 resistance and *oriP/EBNA-1* already on the BAC vector. It was retrofitted with pRetroNeoLuc to give BACGFPNeoOERetroNeoLuc. In this case the original 18-kb vector fragment is changed to two fragments of 22 and 3 kb (Fig. 1c and 2b). On control plates about 1000 colonies (10^4 per μ g) were obtained while there were seven on the retrofitting plates. Seven colonies were analysed and 7 were correctly retrofitted but 1 had a rearrangement in the insert (data not shown).

Thirdly, BAC 4B19 which contains about 150 kb of aliphoid DNA in the BACe3.6 vector was retrofitted with pNEL γ . This vector retrofits G418 resistance and EGFP expression and carries a *loxP* site and the gamma origin [14]. The 8.7-kb vector fragment of BACe3.6 is replaced by fragments of 6.8 kb, 4.1 kb, 3.4 kb and 2.6 kb (Fig. 2c). 50 colonies were obtained, 6 out of 6 analysed had been correctly retrofitted but 5 out of 6 had deletions (up to 40 kb) in the aliphoid DNA.

Expression of luciferase in vitro

In order to determine whether the luciferase gene on the retrofitting vectors was functioning before and after retrofitting, transient transfections were carried out into the

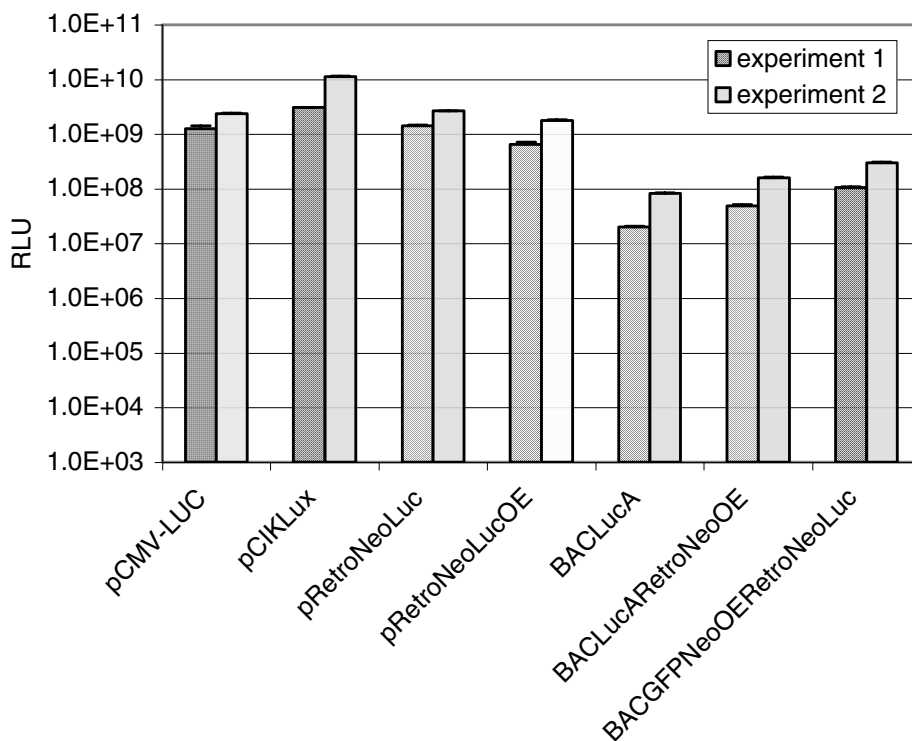


Figure 3
Transient transfection showing the luciferase expression measured at 24 hours Plasmid (1 µg) and BAC (3 µg) DNA as indicated below the bars was transfected into the cells with PEI22. Two separate experiments were carried out. Each experiment was done in triplicate and the error bars indicate the standard deviation.

mouse cell line B16F10 using PEI22. Transfections were carried out with 1 µg of the plasmids pCMV-LUC, pCIKLux, pRetroNeoLuc, and pRetroNeoLucOE, and 3 µg of the BACs BACLucA, BACLucARetroNeoOE and BACGFP-NeoOERetroNeoLuc. Two separate experiments were carried out with triplicate samples and the results are shown in Figure 3. The retrofitting plasmids give almost identical luciferase expression to the control pCMV-LUC and pCIKLux plasmids. Expression of luciferase is approximately 25 fold lower when the BAC DNA is transfected. Three times the mass of BAC DNA as plasmid DNA was delivered, but the BACs are much larger (average 108 kb) than the plasmids (average 7.8 kb), so we were delivering approximately 1/5 the number of BAC as plasmid molecules. Therefore, the lower number of molecules (5 fold less) does not entirely account for the lower expression (25

fold less) from the BACs – we obtained an approximately 5 fold less efficient delivery of BAC DNA per molecule. In addition, it is clear that in these transient experiments assayed 24 hours after transfection, there is no difference between the corresponding constructs with or without oriP/EBNA-1 (pRetroNeoLuc versus pRetroNeoLucOE and BACLucA versus BACLucARetroNeoOE).

Intact delivery and maintenance of a BAC with oriP/EBNA-1

To investigate delivery and maintenance of BACs carrying *oriP/EBNA-1* elements, stable cell lines were generated with BACGFPNeoOE which carries *oriP/EBNA-1* on the vector. Purified BAC DNA was delivered to B16F10 cells with Lipofectamine 2000 and six stable cell lines were selected with G418. After 30 days of culture under selection

the percentage of GFP expressing cells was determined by FACs analysis (Fig. 4a). Between 63 and 98% of the cells in each cell line expressed GFP.

After 35 days in culture, high-molecular-weight DNA was prepared from the six cell lines and electroporated into bacteria which were then grown on chloramphenicol-containing agar. DNA was extracted from 5 clones from each of the six cell lines, digested with *Sall* and analysed on an agarose gel (three are shown for each mammalian cell line in Fig. 4b). In 5 of the cell lines (1, 3, 4, 5 and 6) the BAC DNA extracted from the mammalian cells matched the input BAC DNA in all 5 *E. coli* clones. One cell line, number 2, gave some *E. coli* clones with rearranged BACs; of 8 clones analysed from this cell line, 4 were rearranged, always in the insert rather than the vector region, while 4 were unrearranged. To further investigate the rescued BAC DNA, a pulsed-field gel was used to fully resolve the BAC fragments for 3 of the clones from cell line 4 (Fig. 4c). It is clear that the *Sall* fragments of the rescued DNA exactly match the input DNA. The BAC DNA has therefore been Lipofected intact into the cells and maintained as episomes for 37 days without rearrangement.

In vivo transfection

BAC DNA was also introduced into muscles *in vivo* by injection followed by electroporation. BACLucA, BACLucARetroOE and BACGFPNeoOERetroNeoLuc all gave approximately the same amount of luciferase expression, approximately 5×10^5 RLU, 24 hours after electroporation. Muscles from untransfected mice gave the same as background levels (about 50 RLU). The presence of *oriP/EBNA-1* on the BAC does not make a significant difference to the level of expression at 24 hours (compare BACLucA and BACLucARetroOE). The control plasmid pCMV-LUC (5.9 kb) gave approximately 100 fold more luciferase expression than the BACs (average 108 kb). In this case the same mass of plasmid and BAC were electroporated so approximately 18 times as many copies of plasmid were applied indicating that BAC transfer is approximately 5 fold less efficient per copy.

Discussion

As all BACs carry a *loxP* site and do not carry the spectinomycin resistance gene these plasmids are of general use for retrofitting. G418 resistance allows selection of stable transformants in tissue culture, the luciferase expression cassette allows efficient quantitation of gene expression in tissue culture and *in vivo* while *oriP/EBNA-1* allows stable maintenance as episomes in tissue culture and possibly *in vivo*.

The *in vivo* retrofitting protocol is very efficient giving tens of colonies from a single electroporation. Almost all the colonies that grow contain the correctly retrofitted BAC.

The only rearrangements observed were in the two larger BACs. The 70-kb insert consisting of alphoid DNA did not rearrange. The 130 kb of random human DNA rearranged very rarely while the 150 kb of alphoid DNA usually rearranged. Alphoid DNA consists of almost identical tandem repeats so the ability to retrofit the BAC with 150 kb of alphoid DNA without rearrangement is a stringent test of this system. The *in vivo* retrofitting works with both the new pRetro vectors and with the previously described retrofitting vectors pNEL γ , which carries G418 resistance and EGFP, and pNEL γ 1 which carries also an *I-SceI* site for linearisation [14]. In addition, the modular nature of the pRetro vectors allows other selectable markers or reporter genes to be easily added.

Transfection of the retrofitting plasmids and retrofitted BACs with PEI22 showed that the luciferase was efficiently expressed. Expression from the BACs was only about 5 fold less per molecule than for the control plasmids indicating that the BAC DNA up to 155-kb in size is being delivered only moderately less efficiently than small plasmid DNA with PEI22.

Stable transfection of a 150-kb BAC carrying *oriP/EBNA-1* was used as a stringent test of the ability to transfect such large DNA intact into mammalian cells in tissue culture. Rescue of episomal BAC DNA into *E. coli* is a quick and efficient way of determining whether the BAC DNA has been delivered and maintained intact [31]. Delivery of the 155-kb BAC with Lipofectamine 2000 resulted in 5 out of 6 mammalian cell lines which carried only the intact BAC after 35 days in culture while the 6th had some rearranged and some intact BAC episomes. Other investigators have described intact delivery of similarly sized *oriP/EBNA1*-BACs. A 200-kb *oriP/EBNA1*-BAC was delivered with Lipofectamine but the intactness of the DNA was not analysed in detail and only pools of cell clones were analysed [25]. A 117-kb *oriP/EBNA1*-BAC was delivered by calcium phosphate co-precipitation but only one cell line was described so the frequency with which such large DNA was delivered and maintained intact is not clear [31]. In a further study, delivery of a 130-kb *oriP/EBNA1*-BAC with lipofectin/integrin-binding peptide/DNA (LID) complex resulted in only 2 cell lines out of many screened with the intact BAC DNA [26]. In addition, a very effective viral packaging and delivery system has been described for *oriP/EBNA1*-BACs up to about 150 kb in size [17]. Thus, Lipofectamine 2000 is the best of the non-viral delivery systems which have been used to deliver *oriP/EBNA1*-BACs intact.

In vivo delivery by injection of DNA into muscle followed by electroporation with electric pulses of low field strength and long duration has been used to efficiently deliver plasmid DNA. The level of expression from plasmid

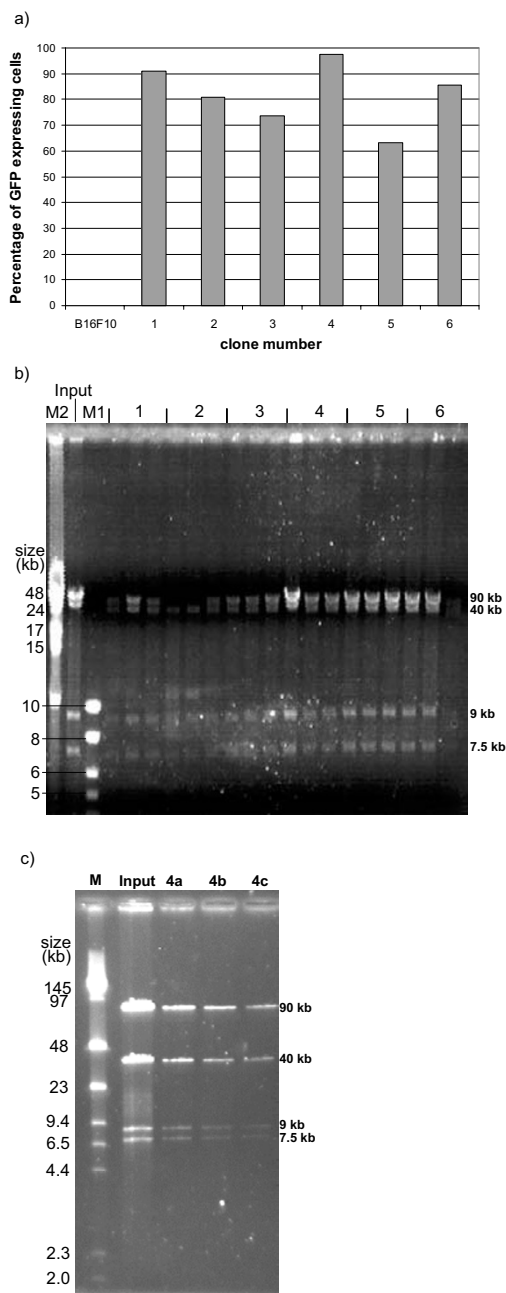


Figure 4

Analysis of stable cell lines 0.5 µg of BACGFPNeoOE DNA was transfected into B16F10 cells with Lipofectamine 2000 and 6 clones were expanded in G418 selection. a) The percentage of cells expressing GFP was determined by FACS analysis at 30 days. B16F10 indicates untransfected cells. b) Analysis of DNA rescued from the 6 stable cell lines. DNA was extracted from the 6 cell lines and re-transfected into *E. coli*. DNA from 3 *E. coli* clones are shown for each B16F10 cell line as indicated above the lanes. Cell line number 2 gave rearranged BAC DNA in two *E. coli* clones, while the third is unrearranged. DNA was cut with *Sall* and resolved on a 0.3% SeaKem Gold agarose gel. Size marker M1 is the 1 kb DNA Ladder from Promega and M2 is the Lambda DNA-Mono Cut Mix from Biolabs. In between the two markers is the input BAC DNA cut with *Sall*. The sizes of the markers and BAC fragments are shown on the left and right of the gel respectively. c) Pulsed-field gel showing that the BAC DNA rescued from the cell lines is the same as the input DNA. The lanes carry; Low Range PFG marker (Biolabs)(M), input BACGFPNeoOE DNA cut with *Sall* (input), and DNA from three *E. coli* clones from cell line number 4 (4a, 4b and 4c) cut with *Sall*. The sizes of the markers and BAC fragments are indicated on the left and right of the gel respectively.

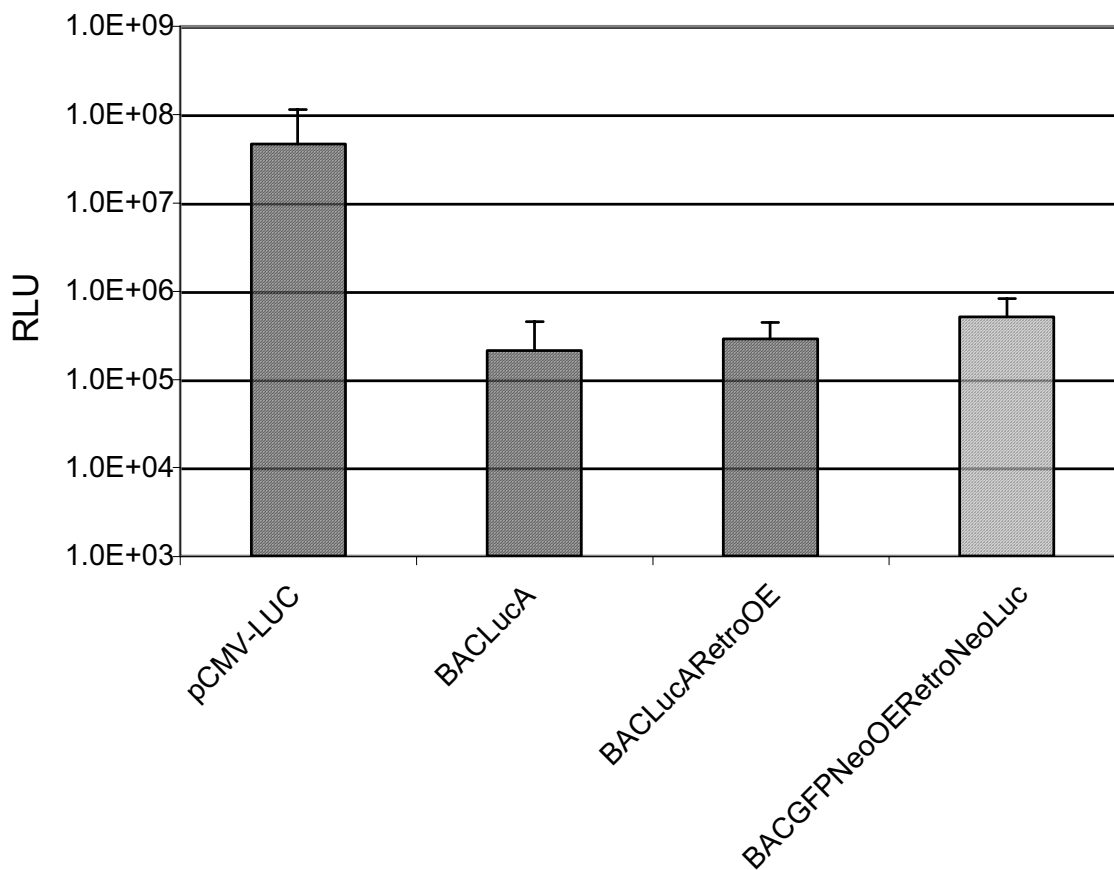


Figure 5
***In vivo* delivery and expression of luciferase** Twenty µg each of plasmid pCMV-LUC and BACs BACLucA, BACLucARetroOE, and BACGFPNeoERetroNeoLuc DNA was injected and electroporated into mouse muscle. Luciferase expression was assayed 24 hours after gene delivery. Background levels in un-treated mice is about 50 RLU.

DNA is generally 30–150 fold higher than with microinjection alone [32–36]. The expression obtained here with BAC DNA was only about 5 fold lower per molecule than with the plasmid DNA indicating that *in vivo* electroporation into muscle is a very effective method for delivering DNA up to at least 150 kb in size.

Conclusions

The pRetro vectors allow efficient retrofitting of BACs with G418 resistance, luciferase and/or *oriP/EBNA-1*, by *in vivo loxP/Cre* recombination. The retrofitted BAC DNA can be efficiently delivered to cells in tissue culture and to mouse muscles *in vivo* and the luciferase gene is well expressed.

The BAC DNA is transfected only about 5 fold less efficiently than plasmid DNA using PEI22 *in vitro* or electroporation into muscles *in vivo*. Lipofectamine 2000 allowed intact transfection of a 150-kb BAC into cells in tissue culture and the BAC was maintained as an *oriP/EBNA-1* episome for 35 days without rearrangement of the DNA. Retrofitting of BACs with these vectors should facilitate long-term gene expression from BAC clones for study of gene expression and for gene therapy applications.

Methods

Plasmids and BACs

The 2.2-kb *HindIII* fragment carrying the spectinomycin resistance gene from pWM5 [37] was cloned into the *HindIII* site of pBluescript II KS (Stratagene) to give pLP1S. The 1.1-kb *XhoI-Sall* fragment from pMC1neo Poly A (Stratagene) was cloned into the *Sall* site of pLP1S to give pLP3S. The 3.3-kb *XhoI-EcoRV* fragment containing the spectinomycin resistance and G418 resistance genes from pLP3S was cloned to a 700-bp *XhoI-PvuII* fragment carrying the gamma origin (R6K ori) and *loxP* site from pUni/V5-His-TOPO (Invitrogen) to give pRetroNeo. The host bacteria for pRetroNeo and all the other pRetro vectors were PIR1 cells (Invitrogen).

A 3-kb *BglII-NaeI* (*BglII* end blunt ended with Kenow +dNTPs) from pCIKLux [38] carrying a luciferase expression cassette was cloned into pRetroNeo cut with *KpnI* (and the ends blunt ended with Klenow without dNTPs) to give pRetroNeoLuc. The plasmid pCIKLux consists of 1.6 kb of luciferase ORF from pGL3 (Promega) cloned into pCI (Promega) so that it is driven by the CMV promoter and enhancer.

The 5.7-kb *Sall-FspI* fragment from pCEP4 (Invitrogen) carrying the *oriP/EBNA-1* cassette was cloned into *Sall-PvuII* cut pSP73 Vector (Promega) to give pSP73OE. The 5.7-kb *Sall-XhoI* fragment from pSP73OE carrying *oriP/EBNA-1* was cloned into pRetroNeoLuc cut with *Sall* to give pRetroNeoLucOE.

The 5.7-kb *Sall-XhoI* fragment from pSP73OE was also cloned into *Sall* cut pRetroNeo to give pRetroNeoOE.

The control plasmids pCMV-LUC [39] and pCIKLux [38] were also used in transfections.

BACLucA has a vector based on pBeloBAC 11 [28] but with a luciferase expression cassette (pLUCBAC) [40] and then 70 kb of alphoid DNA from pPAC4-7c5 [41] cloned into the vector. The vector of BACGFPNeoOE is also based on pBeloBAC 11 but also has a GFP expression cassette, G418 resistance and *oriP/EBNA-1*. The insert of BACGFPNeoOE is a random 130-kb human insert [40]. BAC 4B19 has a pBACe3.6 vector [30] and contains about 150 kb of alphoid DNA.

In vivo retrofitting method

To make the BAC-containing bacteria electrocompetent, 99 ml of LB with 12.5 µg/ml chloramphenicol was inoculated with 1 ml of saturated culture of the bacteria and grown for about 3 hours at 37°C with shaking till an OD₆₀₀ of 0.6–0.8 was reached. The culture was cooled down on ice for 30 min. Two lots of 50 ml were spun down at 3,000 rpm (Sorval) for 15 mins at 4°C, rinsed

twice with 10 ml ice cold water, washed (with resuspension) with ice cold 10% glycerol and finally resuspended in 250 µl (per 50 ml of bacterial culture) of ice cold 10% glycerol. Then aliquots of 40 µl per 1.5 ml tube were snap frozen with liquid nitrogen and stored at -70°C or used directly.

100 ng of the retrofitting plasmid and 100 ng of pJM2545 [16] were electroporated into the bacteria using 1 mm cuvettes and a BioRad electroporator (Gene Pulser II) at 1.8 kV, 25 µF and 200 Ohm. 1 ml of LB with 0.5 mM IPTG was added and incubated at 37°C for 1 hour with shaking. The bacteria were spun down and plated in total on an LB plate with 12.5 µg/ml chloramphenicol and 50 µg/ml spectinomycin. The plates were incubated at 30°C for 75 minutes and then at 42°C overnight.

BAC DNA preparation

BAC DNA for transfection was prepared with Qiagen EndoFree Plasmid Mega Kit (without using the QIAfilter Cartridges supplied in this Kit). Cultures of BACs were grown overnight at 37°C in 2.5 L of LB medium containing 12.5 µg/ml chloramphenicol. The bacteria were harvested in 500 ml aliquots by centrifugation for 20 min at 4°C and 6,000 × g in a Sorvall GS3-Rotor. The pellet was resuspended in 200 ml ice-cold buffer P1. 200 ml buffer P2 was then added and mixed gently but thoroughly by inverting the tube 4–6 times. The mixture was incubated at room temperature for 5 min. 200 ml ice-cold buffer P3 was added, mixed gently but thoroughly by inverting the tube 4–6 times, and the mixture incubated for 30 min on ice. The mixture was centrifuged at 20,000 × g for 30 min at 4°C. The supernatant containing the BAC DNA was removed and re-centrifuged at 20,000 × g for 15 min at 4°C. The supernatant containing the BAC DNA was transferred into a fresh bottle and 50 ml of buffer ER added, mixed gently but thoroughly by inverting 10 times, and incubated on ice for 30 min. A QIAGEN-tip 2500 was equilibrated by adding 35 ml QBT buffer and allowing the column to empty by gravity flow. The DNA solution was loaded onto the QIAGEN-tip and allowed to enter the resin by gravity flow. The QIAGEN-tip was washed with 4 × 50 ml buffer QC. The DNA was eluted with 5 × 7 ml buffer QN (preheated to 65°C). The DNA was precipitated by adding 24.5 ml isopropanol, followed by centrifugation at 15,000 × g for 30 min, 4°C. The supernatant was carefully decanted and the DNA washed with 7 ml endotoxin-free 70% ethanol at room temperature. The tube was immediately centrifuged at 15,000 × g for 10 min, 4°C and the supernatant carefully decanted without disturbing the pellet. The pellet was air dried for approximately 10–20 min and the DNA re-dissolved in 1–2 ml endotoxin-free TE-buffer over night at 4°C. The DNA was re-suspended and subsequently handled using pipette tips for genomic DNA (Biozym Art 200 G or 1000 G).

Cell culture and transfection

B16F10 (kindly provided by I. J. Fidler, Texas Medical Center, Houston, TX, USA) murine melanoma cells were grown in DMEM media 10% FCS, at 37°C with 5% CO₂. Transient transfections were carried out with PEI22 (MBI Fermentas, St. Leon-Rot, Germany). Cells were seeded in 6-well dishes (5 × 10⁵). 24 hours later, 1 µg (plasmid) or 3 µg (BAC) DNA was diluted in 250 µl HBS buffer (20 mM HEPES, 150 mM NaCl, pH 7.4). Then 0.98 µg PEI22 per 1 µg DNA was diluted in 250 µl HBS. The DNA/PEI solution was mixed by pipetting the solution up and down approximately 10 times and then incubated for 30 min at room temp. The old medium was removed from the cells and 1.5 ml of OPTIMEM added to the cells. The transfection mix was then added to the cells and left to incubate for four hours. The medium with the complexes was removed and fresh full growth medium added to the cells. After overnight incubation the cells were assayed for luciferase or GFP expression.

Stable transfections were carried out with Lipofectamine 2000 (Invitrogen Life Technologies). Cells were seeded in 6-well dishes (2 × 10⁵) the day before transfection. Two µl of Lipofectamine 2000 was diluted in 250 µl OPTIMEM, mixed and incubated for 5 min at room temp. 0.5 µg BAC DNA was diluted in 250 µl OPTIMEM and mixed. The Lipofectamine 2000/OPTIMEM was added rapidly to the DNA/OPTIMEM solution and mixed by pipetting up and down approximately 10 times. The transfection complexes were incubated for 30 min at room temp. The old medium was removed from the cells and 1.5 ml of OPTIMEM added to the cells. The transfection mix was added to the cells and left to incubate for three hours. The medium with the complexes was removed and fresh full growth medium added to the cells. After an overnight incubation, the cells were trypsinized and 1/16 of the cells seeded onto each of 4 separate 10-cm tissue culture plates. The medium was replaced on day 3 with fresh medium containing 800 µg/ml G418. The selective medium was replaced on day 6 and 9. On day 10 colonies were picked into 24 well plates. On day 14 they were transferred into T25 flasks and from then on passaged twice a week (twice at 1:5 dilution and thereafter at 1:10). GFP expressing cells were counted at day 30 and DNA preparations were carried out at day 35.

Luciferase and GFP assays

Luciferase assays were carried out on transiently transfected cells and on mouse organs. For transiently transfected cells, the culture medium was removed from the 6-well dish and the cells were washed once with PBS. The cells in each well were lysed with 1 ml of lysis buffer (25 mM Tris-Phosphate pH 7.8, 2 mM DTT, 2 mM CDTA (trans-1,2-diaminocyclohexane-N,N,N',N'-tetra-acetic acid), 1% Triton-X100, 10% glycerol) for 5 minutes and snap frozen in

liquid nitrogen. For mouse muscles, approximately 200 mg from the right upper thigh muscle of treated mice were dissected 24 hours after electroporation and placed into 600 µl of ice cold 250 mM Tris-HCl pH 7.8. The tissue was homogenised on ice for one minute using an IKA Ultra-Turrax homogenizer. Samples were snap frozen in liquid nitrogen immediately and stored at -80°C.

Samples were rapidly thawed in a waterbath at 37°C and immediately centrifuged for 10 min at 15,000 rpm and 4°C. For measurement, 350 µl assay buffer (25 mM glycyl-glycin pH 7.8, 15 mM MgSO₄, 5 mM ATP) and 10 µl of cell lysate or 50 µl of supernatant of organ homogenate were mixed in a Sarstedt (No. 55.476) tube and luciferase activity was quantified using a LUMAT LB 9507 (Fa. Berthold, Bad Wildbad, Germany). To do this, 300 µl of injection buffer (20 mM glycyl-glycine pH 7.8, 0.2 mM sodium salt of D-Luciferin (SIGMA)) were added and light units were measured for 10 seconds.

Luciferase assay background (approximately 50 light units) was subtracted from each value. One million light units correspond to approximately 2 ng luciferase. Counts shown in the figures were calculated as RLU (relative light units) per transfection sample or RLU per organ in total.

For counting GFP-expressing cells, cells were trypsinized, fixed with 2% paraformaldehyde in PBS for 45 minutes at room temperature, washed twice in PBS and counted with a BD LSR (Beckton Dickinson) FACs using Cell Quest software.

Rescue of BAC DNA into E. coli

In order to determine whether the *oriP/EBNA-1* BACs were intact in the mammalian cells after 5 weeks culture, high-molecular-weight DNA was prepared from the cell lines and electroporated into bacteria.

To prepare high-molecular-weight DNA, cells were harvested by trypsinisation, suspended in full media, washed twice with PBS and suspended at 4 × 10⁷ cells per ml in PBS. The cell suspension was warmed to 42°C and mixed with 1 volume of 1.5% low-melting agarose (Sigma) in 0.125 M EDTA pH 8.0 equilibrated to 42°C. The mixture was then aliquotted into 75-µl plugmolds (BioRad) and left for 5 minutes on ice. The plugs were then transferred into a 1.5 ml tube with 500 µl of NDS solution (1% N-lauroyl sarcosine, 10 mM Tris-HCl pH 7.8, 0.39 M EDTA, 2 mg/ml proteinase K added freshly) and incubated for 1 hour at 55°C. The NDS solution was removed and the plugs were washed three times with EDTA mix (50 mM EDTA, 10 mM Tris-HCl pH 7.5) at room temperature for 30 min each wash. They were then washed twice with 1 × agarase buffer (NEB) on ice for 30 min each wash.

For electroporation into *E. coli*, a plug was melted at 65°C for 10–15 min, cooled to 45°C for 5–10 min and 1 µl agarase (NEB) added per plug. The plugs were incubated for 1 hour at 42°C and diluted with 1 volume of sterile water. Two µl of the DNA solution was electroporated into 40 µl DH10B ElectroMax bacteria (Invitrogen Life Technologies) using a BioRad GenePulser with 0.1 cm cuvettes and 2.5 kV, 25 µF, and 100 Ohm. 1 ml of SOC medium (Gibco) was added and the bacteria incubated with shaking at 37°C for 1 hour. Bacteria were plated out onto LB with chloramphenicol at 12.5 µg/ml.

Conventional agarose gels and pulsed-field gels

Conventional agarose gels were carried out using 0.3% SeaKem Gold Agarose (Biozym) in 1 × TAE. Gels were run in 1 × TAE at a constant voltage of 80 V for two to three hours in standard horizontal agarose electrophoresis cells (Biorad).

Pulsed-field gels were carried out using *ultra*PURE agarose (Gibco) at 1% in 0.5 × TBE. Gels were run in 0.5 × TBE at 14°C for 18 hours over night, with a fixed angle of 120°, switching times from 5 sec to 1 sec and 5.9 V/cm using a Chef-DRIII and a Mini Chiller model 1000 with a variable speed pump (BioRad).

Gels were stained with ethidium bromide and the DNA was visualised with UV light.

In vivo electroporation

BALB/c mice were anaesthetised and the right leg was shaved. 20 µg of plasmid or BAC DNA was diluted in 50 µl of 150 mM NaCl and injected into the right upper thigh muscle. The muscle was immediately electroporated with a two needle electrode device (5 mm distance between electrodes; Genetronics, San Diego) placed on either side of the injection site. Three pulses of 90 V for 25 ms and then three more pulses of 90 V for 25 ms in the opposite orientation were applied with a square wave pulse generator (BTX, San Diego). Three animals were electroporated for each type of DNA and the error bars show standard deviations. All mice work was carried out according to local ethical committee guidance.

Authors' contributions

C. M-L. made pRetroNeoLuc, pRetroNeoLucOE and pRetroNeoOE, retrofitted BACLucA and BACGFPNeoOE, designed and carried out all the transfections, gene delivery and rescue of BAC DNA. G. K. made pRetroNeo, developed the *in vivo* retrofitting protocol and retrofitted BAC B419. L. D'A. provided the protocol for DNA rescue into *E. coli*. E. W. and C. H. designed and supervised this investigation. All authors read and approved the final manuscript.

Acknowledgements

We would like to thank Milena Kalat and Susanne Schüller for providing their knowledge and experience concerning *in vivo* electroporation, Ralf Kircheis, Birgit Smrekar and Lionel Wightman for helpful discussions and Malgorzata Kurza, Vanessa Rössler and Aleksandra Sinski for excellent technical assistance (Boehringer Ingelheim Austria). We thank Adam Baker (at present Decode, Iceland) for the gift of BACLucA and BACGFPNeoOE and Sebastian Carotta for helpful remarks concerning experimental details (Institute of Molecular Pathology, Vienna). This work was supported by EU Training Network HPRN – CT-2000 – 00089 (MAKEMAC).

References

1. Yang XW, Model P and Heintz N **Homologous recombination based modification in *Escherichia coli* and germline transmission in transgenic mice of a bacterial artificial chromosome.** *Nature Biotechnology* 1997, **15**:859-865
2. Lalioti MD and Heath JK **A new method for generating point mutations in bacterial artificial chromosomes by homologous recombination in *Escherichia coli*.** *Nucleic Acids Res* 2001, **29**:e14
3. Imam AMA, Patrinos GP, de Krom M, Bottardi S, Janssens RJ, Katsantoni E, Wai AVK, Sherratt DJ and Grosveld FG **Modification of human β -globin locus PAC clones by homologous recombination in *Escherichia coli*.** *Nucleic Acids Res* 2000, **28**:e65
4. Zhang Y, Buchholz F, Muyrers JPP and Stewart AF **A new logic for DNA engineering using recombination in *Escherichia coli*.** *Nature Genetics* 1998, **20**:123-128
5. Narayanan K, Williamson R, Zhang Y, Stewart AF and Ioannou PA **Efficient and precise engineering of a 200 kb β -globin human/bacterial artificial chromosome in *E. coli* DH10B using an inducible homologous recombination system.** *Gene Therapy* 1999, **6**:442-447
6. Orford M, Nefedov M, Vadolas J, Zaibak F, Williamson R and Ioannou PA **Engineering EGFP reporter constructs into a 200 kb human β -globin BAC clone using GET recombination.** *Nucleic Acids Res* 2000, **28**:e84
7. Nefedov M, Williamson R and Ioannou PA **Insertion of disease-causing mutations in BACs by homologous recombination in *Escherichia coli*.** *Nucleic Acids Res* 2000, **28**:e79
8. Muyrers JPP, Zhang Y, Benes V, Testa G, Ansoorge W and Stewart AF **Point mutation of bacterial artificial chromosomes by ET recombination.** *EMBO Reports* 2000, **1**:239-243
9. Lee E-C, Yu D, de Velasco JM, Tessarollo L, Swing DA, Court DL, Jenkins NA and Copeland NG **A highly efficient *Escherichia coli*-based chromosome engineering system adapted for recombinogenic targeting and subcloning of BAC DNA.** *Genomics* 2001, **73**:56-65
10. Mejia JE and Monaco AP **Retrofitting vectors for *Escherichia coli*-based artificial chromosomes (PACs and BACs) with markers for transfection studies.** *Genome Research* 1997, **7**:179-186
11. Kaname T and Huxley C **Isolation and subcloning of large fragments from BACs and PACs.** *BioTechniques* 2001, **31**:273-278
12. Kim SY, Horrigan SK, Altenhofen JL, Arbieva ZH, Hoffman R and Westbrook CA **Modification of Bacterial Artificial chromosome clones using cre recombination: introduction of selectable markers for expression in eukaryotic cells.** *Genome Research* 1998, **8**:404-412
13. Mann KL and Huxley C **Investigation of *Schizosaccharomyces pombe* as a cloning host for human telomere and alphoid DNA.** *Gene* 2000, **241**:275-285
14. Kaname T and Huxley C **Simple and efficient vectors for retrofitting PACs and PACs with mammalian neoR and EGFP marker genes.** *Gene* 2001, **266**:147-153
15. Wang Z, Engler P, Longacre A and Storb U **An efficient method for high-fidelity BAC/PAC retrofitting with a selectable marker for mammalian cell transfection.** *Genome Research* 2001, **11**:137-142
16. Mejia JE and Larin Z **The assembly of large BACs by *in vivo* recombination.** *Genomics* 2000, **70**:165-170
17. Wade-Martins R, Smith ER, Tyinski E, Chioocca EA and Saeki Y **An infectious transfer and expression system for genomic DNA loci in human and mouse cells.** *Nature Biotech* 2001, **19**:1067-1070

18. Calos MP **The potential of extrachromosomal replicating vectors for gene therapy.** *TIG* 1996, **12**:463-466
19. Lee CGL, Vieira WD, Pastan I and Gottesman MM **An episomally maintained MDRI gene for gene therapy.** *Hum Gene Therapy* 2001, **12**:945-953
20. Mücke S, Polack A, Pawlita M, Zehnpfennig D, Massoudi N, Bohlen H, Doerfler W, Bornkamm G, Diehl V and Wolf J **Suitability of Epstein-Barr virus-based episomal vector for expression of cytokine genes in human lymphoma cells.** *Gene Therapy* 1997, **4**:82-92
21. Tomiyasu K, Satoh E, Oda Y, Nishizaki K, Kondo M, Imanishi J and Mazda O **Gene transfer in vitro and in vivo with Epstein-Barr virus-based episomal vector results in markedly high transient expression in rodent cells.** *Biochem Biophys Res Com* 1998, **253**:733-738
22. Saeki Y, Wataya-Kaneda M, Tanaka K and Kaneda Y **Sustained transgene expression in vitro and in vivo using an Epstein-Barr virus replicon vector system combined with HVJ liposomes.** *Gene Therapy* 1998, **5**:1031-1037
23. Simpson K, McGuigan A and Huxley C **Stable episomal maintenance of yeast artificial chromosomes in human cells.** *Mol Cell Biol* 1996, **16**:5117-5126
24. Huertas D, Howe S, McGuigan A and Huxley C **Expression of the human CFTR gene from episomal oriP-EBNA1-YACs in mouse cells.** *Hum Mol Genet* 2000, **9**:617-629
25. Westphal EM, Sierakowska H, Livanos E, Kole R and Vos J-M **A system for shuttling 200-kb BAC/PAC clones into human cells: stable extrachromosomal persistence and long-term ectopic gene activation.** *Hum Gene Therapy* 1998, **9**:1863-1873
26. Wade-Martins R, White RE, Kimura H, Cook PR and James MR **Stable correction of a genetic deficiency in human cells by an episome carrying a 115 kb genomic transgene.** *Nat Biotechnol* 2000, **18**:1311-1314
27. Stoll SM, Scimmenti CR, Baba EJ, Meuse L, Kay MA and Calos MP **Epstein-Barr virus/human vector provides high-level, long-term expression of alpha antitrypsin in mice.** *Mol Ther* 2001, **4**:122-129
28. Kim U-J, Birren BV, Slepak T, Mancino V, Boysen C, Kang H-L, Simon MI and Shizuya H **Construction and characterization of a human bacterial artificial chromosome library.** *Genomics* 1996, **34**:213-218
29. Frengen E, Zhao B, Howe S, Weichenhan D, Osoegawa K, Gjernes E, Jessee J, Prydz H, Huxley C and de Jong PJ **Modular bacterial artificial chromosome vectors for transfer of large inserts into mammalian cells.** *Genomics* 2000, **68**:118-126
30. Osoegawa K, Mammoser AG, Wu C, Frengen E, Zeng C, Catanese JJ and de Jong PJ **A bacterial artificial chromosome library for sequencing the complete human genome.** *Genome Research* 2001, **11**:483-496
31. Wade-Martins R, Frampton J and James MR **Long-term stability of large insert genomic DNA episomal shuttle vectors in human cells.** *Nucleic Acids Res* 1999, **27**:1674-1682
32. Bettan M, Emmanuel F, Darteil R, Caillaud JM, Soubrier F, Delaere P, Branellec D, Mahfoudi A, Duverger N and Scherman D **High-level protein secretion into blood circulation after electric pulse-mediated gene transfer into skeletal muscle.** *Mol Ther* 2000, **2**:204-210
33. Mir LM, Bureau MF, Gehl J, Rangara R, Rouy D, Caillaud JM, Delaere P, Branellec D, Schwartz B and Scherman D **High-efficiency gene transfer into skeletal muscle mediated by electric pulses.** *Proc Natl Acad Sci U S A* 1999, **96**:4262-4267
34. Aihara H and Miyazaki J **Gene transfer into muscle by electroporation in vivo.** *Nat Biotech* 1998, **16**:867-870
35. Mathiesen I **Electroporabilization of skeletal muscle enhances gene transfer in vivo.** *Gene Ther* 1999, **6**:508-514
36. Rizzuto G, Cappelletti M, Maione D, Savino R, Lazzaro D, Costa P, Mathiesen I, Cortese R, Ciliberto G, Laufer R, La Monica N and Factori E **Efficient and regulated erythropoietin production by naked DNA injection and muscle electroporation.** *Proc Natl Acad Sci U S A* 1999, **96**:6417-6422
37. Metcalf WW and Wanner BL **Construction of new β -glucuronidase cassettes for making transcription fusions and their use with new methods for allele replacement.** *Gene* 1993, **129**:17-25
38. Gill DR, Smyth SE, Goddard CA, Pringle IA, Higgins CF, Colledge WH and Hyde SC **Increased persistence of lung gene expression using plasmids containing the ubiquitin C or elongation factor 1 α promoter.** *Gene Therapy* 2001, **8**:1539-1546
39. Plank C, Zatloukal K, Cotten M, Mechtler K and Wagner E **Gene transfer into hepatocytes using asialoglycoprotein receptor mediated endocytosis of DNA complexed with an artificial tetra-antennary galactose ligand.** *Bioconjug Chem* 1992, **3**:533-539
40. Baker A and Cotten M **Delivery of bacterial artificial chromosomes into mammalian cells with psoralen-inactivated adenovirus carrier.** *Nucleic Acids Res* 1997, **25**:1950-1956
41. Ebersole TA, Ross A, Clark E, McGill N, Schindelbauer D, Cooke H and Grimes B **Mammalian artificial chromosome formation from circular alphoid input DNA does not require telomere repeats.** *Hum Mol Genet* 2000, **9**:1623-1631

Publish with **BioMed Central** and every scientist can read your work free of charge

"BioMed Central will be the most significant development for disseminating the results of biomedical research in our lifetime."

Sir Paul Nurse, Cancer Research UK

Your research papers will be:

- available free of charge to the entire biomedical community
- peer reviewed and published immediately upon acceptance
- cited in PubMed and archived on PubMed Central
- yours — you keep the copyright

Submit your manuscript here:
http://www.biomedcentral.com/info/publishing_adv.asp

